

# Gallery

**SITKA™**

---

GALLERY SITKA REPRESENTED ARTIST

**CAROLYN TODD**

---

For questions about purchasing the artwork,  
please call 978.425.6290 or contact [office@galleriesitka.com](mailto:office@galleriesitka.com).

Catalog printed in July 2021. The prices, information,  
and availability are subject to change.

View all artwork online at  
[GALLERYSITKA.COM](http://GALLERYSITKA.COM)

#SupportTheArts

ENCAUSTIC BY

# CAROLYN TODD



**Bleeding Heart**

by Carolyn Todd  
Acrylic on Canvas  
16" x 16"  
\$275



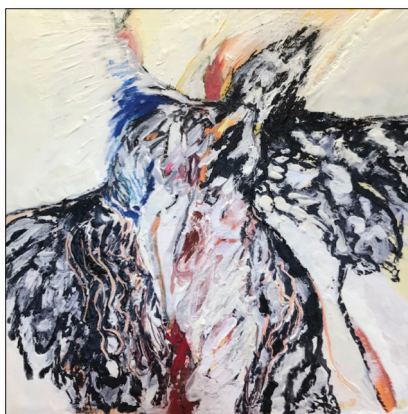
**The Bend**

by Carolyn Todd  
Encaustic on Board  
12" x 12"  
\$225



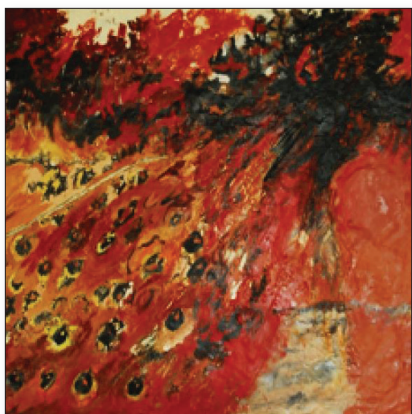
**Rarely Seen**

by Carolyn Todd  
Acrylic on Board  
14" x 14"  
\$350



**Earthbound**

by Carolyn Todd  
Encaustic on Board  
16" x 18"  
\$250



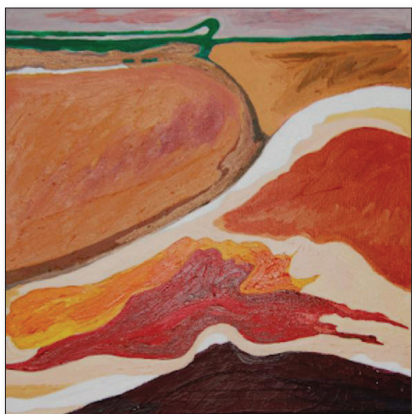
## Cornutum, 2011

by Carolyn Todd  
Encaustic on Panel  
26" x 32"  
\$1,500



## The Orangutan, 2019

by Carolyn Todd  
Encaustic  
24" x 24"  
\$1,500



## Collection, 2020

by Carolyn Todd  
Acrylic on Canvas  
16" x 16"  
\$185



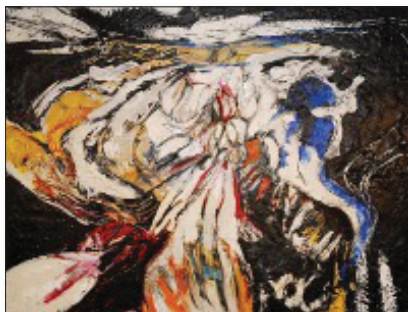
## Deliberate

by Carolyn Todd  
Encaustic on Board  
20" x 20"  
\$325



## Bones – LBH, 2012

by Carolyn Todd  
Encaustic on Panel  
42" x 42"  
\$4,000



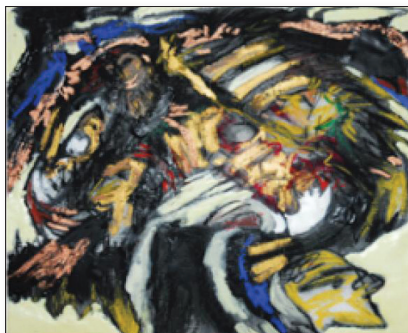
## Indigo, 2012

by Carolyn Todd  
Encaustic on Panel  
26" x 32"  
\$1,200



## Dagger #1

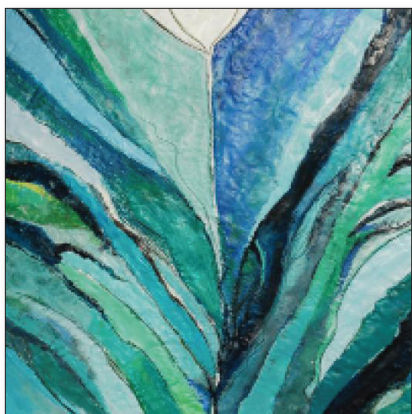
by Carolyn Todd  
Encaustic on Board  
16" x 20"  
\$300



## Woman of Color, 2013

by Carolyn Todd  
Encaustic on Panel  
8" x 12"  
\$185





## Ode to O, 2014

by Carolyn Todd  
Encaustic on Panel  
36" x 36"  
\$1,500



## Global, 2021

by Carolyn Todd  
Encaustic  
12" x 12" x 2"  
\$225



## Stand Still, 2015

by Carolyn Todd  
Encaustic on Panel  
36" x 36"  
\$1,500



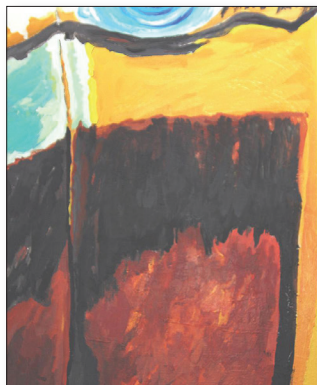
## She Takes Care of Us, 2020

by Carolyn Todd  
Encaustic on Panel  
8" x 12"  
\$160



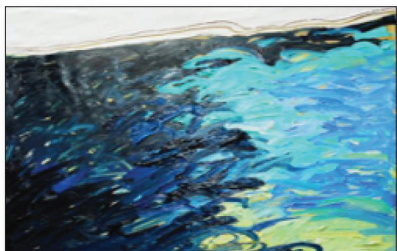
## The Shore, 2020

by Carolyn Todd  
Encaustic  
16" x 20"  
\$425



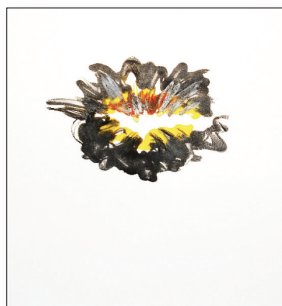
## The Red-Billed Toucan, 2020

by Carolyn Todd  
Acrylic  
16" x 20"  
\$350



## The Water, 2014

by Carolyn Todd  
Encaustic on Panel  
20" x 16"  
\$185



## To the Depth of Loss, 2014

by Carolyn Todd  
Framed Encaustic Monoprint  
N/A  
Not For Sale



## Big Bend National Park, 2019

by Carolyn Todd  
Encaustic on Panel  
36" x 72", Triptych  
\$4,500



## River Not Alone, 2011

by Carolyn Todd  
Encaustic on Panel  
20" x 54", Triptych  
\$2,100

## ARTIST'S BIOGRAPHY — CAROLYN TODD

**A**s a fourth-generation Texan, I grew up exploring Texas deserts, prairies, wetlands, and forests through visual media of all kinds. At an early age, I decided to share my discoveries of animals and environments through the visual arts. All my interpretations of Texas and the southwest seek to draw the viewer in to scenes of incredible texture, heat, and color. I was a volunteer for Texas Parks and Wildlife for over 20 years. While completing my master's degree, I was inspired by the idea that art increases and sharpens our life experiences."

"The University of Texas at Austin awarded me an art scholarship that led me to a Bachelor of Fine Arts degree. I also earned a Master of Arts degree from the University of Houston. I have worked as an art therapist in Galveston, as a secondary art teacher in Webb and Dobie Middle Schools in Austin, and at Georgetown High School, Georgetown, Texas.

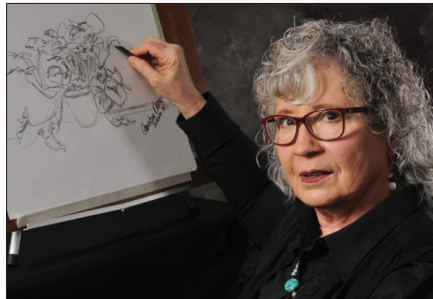
"My paintings, drawings, and illustrations have been shown in private collections, galleries, salons, and restaurants in Texas and throughout South America. Solo and group shows in Texas include the Bay 6 Gallery group show, "Fused Expressions"; the Inn on the Riverwalk show (San Antonio); the Texas Wax "Degrees" show (Houston); the group show "Global Swarming," exhibited in buildings on the grounds of the State Fair of Texas (Dallas); "The Alchemy of Encaustic" in Kilgore College (Kilgore); Wax 10x10 (Amarillo); Congress Old Bakery and Emporium (Austin); encaustic shows at the Dougherty Arts Center (Austin); Round Rock Arts (Round Rock); Red Poppy Coffee (Georgetown); and the Corridor in Downtown (Austin). I have been fortunate to exhibit watercolor and encaustic shows at the Georgetown Library. I was selected for a solo show at the main gallery, Cultural Activities Center in Temple, Texas.

"I was fortunate to be selected as the "Artist in Residence" for the National Park Service, Amistad National Recreation Area, Del Rio, Texas. My solo show, "El Cielo, las Mesas y el Rio Diablo," was a fabulous experience and a great success. For the show, I exhibited oil, acrylic, and watercolor paintings inspired by the park. I taught "plein air" painting and mixed media classes located on private ranches in the area and classroom watercolor painting for college and adult students at the Del Rio Fine Arts gallery and studio.

"My first Massachusetts solo show took place at the Conant Gallery of Lawrence Academy in Groton, Mass. My paintings and drawings have been exhibited in four local art association shows: the Artist League of Lowell, the Gardner Area League of Artists, the Nashua Area Artists Association, and the Princeton Arts Society."

Born: Texas

Studio: Lunenburg, MA



Carolyn Todd

[READ MORE AT GALLERYSITKA.COM/CAROLYN-TODD](https://www.galleriesitka.com/carolyn-todd)

## HISTORY OF GALLERY SITKA

Gallery Sitka™ opened in May 2014 and was part of Sitka Creations®, a design studio. We adopted the name Gallery Sitka™ in August of 2015.

We opened another location on Friday, July 8, 2016, in downtown Fitchburg, MA. Our Ribbon Cutting was at 10 AM on July 8th and our Grand Opening and Solo Reception for Gosha Karpowicz was on July 9th from 1-4 PM. On December 1st, 2018 we closed our Fitchburg location. On June 15, 2019 we opened a tiny gallery in Shelburne Falls, MA which we closed on November 1, 2019. We currently operate out of our Shirley, MA mill space at The Phoenix Park.

We hold art exhibits in our space in Shirley. We also manage the Artist's Walkway at The Bull Run in Shirley, MA, as well as a number of other restaurants and offices in New England and in NYC.

## MISSION

Our mission is to support the arts, to be part of the creative economy and provide a space for emerging artists to be seen and to have the experience of showing their work in a gallery-style atmosphere.

In terms of the style that we wish to share with the public, we feel like one of our favorite artists, Ilse Buchert Nesbitt, that "art should uplift". To that end, the work that we carry enhances and beautifies spaces. Generally, the shows we host do not attempt to create conversation relating to political or social situations in our world today. The style we focus on is abstract contemporary.

In terms of policies on work that we accept, as we are a family-friendly gallery, we limit the amount of nude work that comes in the door. We also do not wish to display work that makes grand political, religious or social statements, preferring to beautify our walls and provide refreshment to viewers, than to engage in deep conversations via the work about the state of the world. We hope you will find the work we display encouraging and uplifting.



# GALLERY SITKA.COM

GALLERY SITKA™  
2 SHAKER ROAD, D101  
SHIRLEY, MA 01464

978.425.6290  
OFFICE@GALLERY SITKA.COM  
WWW.GALLERY SITKA.COM