



GALLERY SITKA REPRESENTED ARTIST

**COLETTE ALINE  
SHUMATE-SMITH**

---

For questions about purchasing the artwork,  
please call 978.425.6290 or contact [office@galleriesitka.com](mailto:office@galleriesitka.com).

Catalog printed in July 2021. The prices, information,  
and availability are subject to change.

View all artwork online at  
[GALLERYSITKA.COM](http://GALLERYSITKA.COM)

#SupportTheArts

PAINTINGS & PHOTOGRAPHY BY  
**COLETTE ALINE SHUMATE-SMITH**



## Co-Existence

by Colette Aline Shumate-Smith  
Acrylic on Canvas  
48" x 48"  
**SOLD**



## Don't Throw it Away

by Colette Aline Shumate-Smith  
Acrylic on Canvas  
48" x 48"  
\$1,200



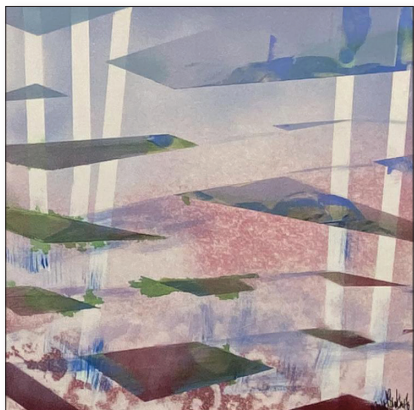
## Cabin In The Valley

by Colette Aline Shumate-Smith  
Mixed Media  
24" x 24"  
\$350



## After The Rain

by Colette Aline Shumate-Smith  
Oil on Canvas  
54" x 48"  
\$1,200



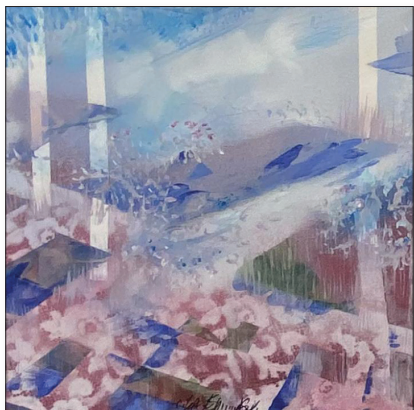
## Crossroads

by Colette Aline Shumate-Smith  
Mixed Media  
18" x 18"  
\$425



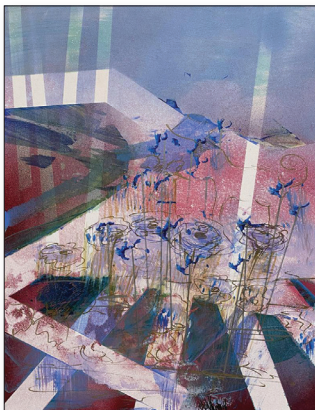
## Beside the Road

by Colette Aline Shumate-Smith  
Mixed Media  
18" x 18"  
\$425



## Road Over Road

by Colette Aline Shumate-Smith  
Mixed Media  
18" x 18"  
\$425



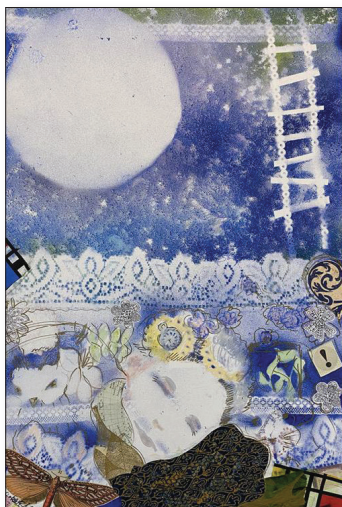
## The Rose Garden

by Colette Aline Shumate-Smith  
Mixed Media  
18" x 24"  
\$425



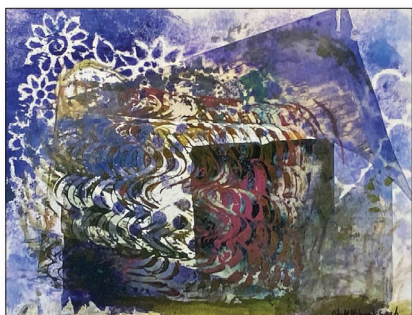
## Cloudscape

by Colette Aline Shumate-Smith  
Acrylic on Canvas  
24" x 32"  
\$850



## Only a Dream

by Colette Aline Shumate-Smith  
Mixed Media  
24" x 36"  
\$1,250



## Owls House

by Colette Aline Shumate-Smith  
Mixed Media  
12" x 16"  
\$225



## One Butterfly

by Colette Aline Shumate-Smith  
Mixed Media  
11" x 14"  
\$225



## Ocean Footprints

by Colette Aline Shumate-Smith  
Acrylic on Canvas  
40" x 10", Triptych  
\$450



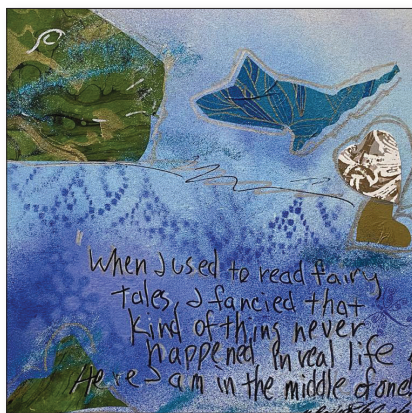
## Wildflower, I

by Colette Aline Shumate-Smith  
Mixed Media  
12" x 12"  
\$75



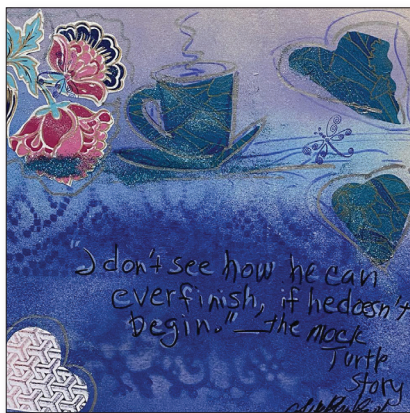
## Wildflower, II

by Colette Aline Shumate-Smith  
Mixed Media  
12" x 12"  
\$75



## Middle of One

by Colette Aline Shumate-Smith  
Mixed Media  
12" x 12"  
\$75



## Ever Finish

by Colette Aline Shumate-Smith  
Mixed Media  
12" x 12"  
\$75



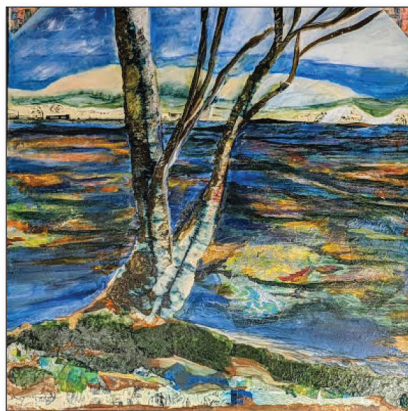
## Farm At Twilight

by Colette Aline Shumate-Smith  
Acrylic on Canvas  
40" x 10", Triptych  
\$450



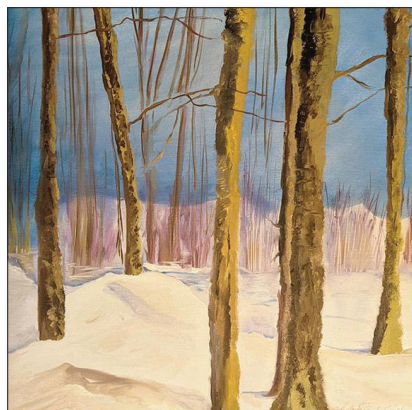
## To Do It

by Colette Aline Shumate-Smith  
Mixed Media  
12" x 12"  
\$75



## Tree with a View

by Colette Aline Shumate-Smith  
Acrylic Mixed Media Paper Collage  
48" x 48"  
\$925



## Morning in Maine

by Colette Aline Shumate-Smith  
Oil on Canvas  
18" x 18"  
\$725



## Silver Lining

by Colette Aline Shumate-Smith  
Acrylic on Canvas  
30" x 20", Triptych  
\$750



## Hiroshima, 2015

by Colette Aline Shumate-Smith  
Silkscreen Underglaze on Raku Clay  
and Glaze  
6" x 13"  
\$450



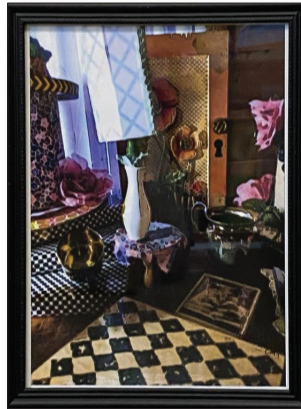
## Nevermore, 2016

by Colette Aline Shumate-Smith  
Silkscreen Underglaze on Raku Clay  
and Glaze  
16" x 12"  
\$450



## Munchkin My Cat, 2017

by Colette Aline Shumate-Smith  
Scratchboard  
21" x 17"  
\$350



## Screen Door

by Colette Aline Shumate-Smith  
Mixed Media  
8" x 10"  
\$325



## Over the Moon

by Colette Aline Shumate-Smith  
Mixed Media  
14" x 18"  
\$325



## Cheshire Cat

by Colette Aline Shumate-Smith  
Mixed Media  
12" x 12"  
\$225



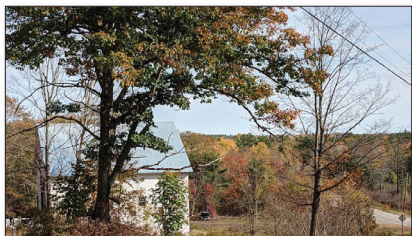
## Reduce, Reuse, Recycle Mug

by Colette Aline Shumate-Smith  
Coffee Mug  
**SOLD**



## LOVE, Earth Mug

by Colette Aline Shumate-Smith  
Coffee Mug  
**SOLD**



## My Roof Touches the Sky, 2020

---

by Colette Aline Shumate-Smith  
 Framed Photography  
 16" x 20"  
 \$275



## Blueberry Fields, 2020

---

by Colette Aline Shumate-Smith  
 Framed Photography  
 16" x 20"  
 \$275



## The Watcher, 2020

---

by Colette Aline Shumate-Smith  
 Framed Photography  
 16" x 20"  
 \$275



## Turn the Corner, in Hope, 2020

by Colette Aline Shumate-Smith  
Framed Photography  
16" x 20"  
\$275



## Happy Little Cloud, 2020

by Colette Aline Shumate-Smith  
Framed Photography  
16" x 20"  
\$275



## The Flatlanda Diner, 2020

by Colette Aline Shumate-Smith  
Framed Photography  
16" x 20"  
\$275



## Let the Light In, 2020

by Colette Aline Shumate-Smith  
Framed Photography  
16" x 20"  
\$275

## ARTIST'S BIOGRAPHY — COLETTE ALINE SHUMATE-SMITH

Colette Aline Shumate-Smith was born in Philadelphia and grew up in Seattle. Her mother and Swedish relatives were artists. She decided early on to pursue a career in art and apprenticed with her mother. Through The Bob Hope Heart Institute, Colette's early sculptures traveled the world when she was 21. A student of Jacob Lawrence, Howard Kottler, Patty Warashina, George Tsutakawa, and Glen Alps, Colette had many influences as she pursued her Bachelor of Fine Arts degree in Seattle at the University of Washington. In 1982 she went on to Boston University. While working on her Masters at the Program in Artistry at B.U., Colette was influenced by Chris Gustin, Richard Hirsh, and Nancy Smith.

Colette taught middle school art for 10 years. In 1993 she became an artist-in-residence with the Massachusetts Cultural Council State Artist Roster. She created many large murals in central Massachusetts, the most complex of which is at Squannacook Elementary School in Townsend and North West School in Leominster, her current hometown.

At Boston University she met David L. Smith. After graduation, they married, raised two children, and continued creating their art together for 32 years. Colette's work is very unique, as she knows how to paint yet continues to break all rules of painting with her Ceramic Raku Art. It does not fit into a current art movement, yet seems to comment on all art movements at once. Cubist, Impressionist and printed painting collages are surreal and speak to the subconscious memory of a time yet to come. Her themes are commenting on the state of the world, yet her color choice is sweet and mysterious.

Colette is now located in Montville, Maine, near Liberty, in a region known as The Kingdom. There she is working to restore an expansive property. The Lodge is her home and studio.

Born: Philadelphia, PA | 1955

Studio: Montville, ME



Colette Aline Shumate-Smith

READ MORE AT [GALLERY SITKA.COM/COLETTE-ALINE-SHUMATE-SMITH](https://www.gallerysitka.com/colette-aline-shumate-smith)

## HISTORY OF GALLERY SITKA

Gallery Sitka™ opened in May 2014 and was part of Sitka Creations®, a design studio. We adopted the name Gallery Sitka™ in August of 2015.

We opened another location on Friday, July 8, 2016, in downtown Fitchburg, MA. Our Ribbon Cutting was at 10 AM on July 8th and our Grand Opening and Solo Reception for Gosha Karpowicz was on July 9th from 1-4 PM. On December 1st, 2018 we closed our Fitchburg location. On June 15, 2019 we opened a tiny gallery in Shelburne Falls, MA which we closed on November 1, 2019. We currently operate out of our Shirley, MA mill space at The Phoenix Park.

We hold art exhibits in our space in Shirley. We also manage the Artist's Walkway at The Bull Run in Shirley, MA, as well as a number of other restaurants and offices in New England and in NYC.

## MISSION

Our mission is to support the arts, to be part of the creative economy and provide a space for emerging artists to be seen and to have the experience of showing their work in a gallery-style atmosphere.

In terms of the style that we wish to share with the public, we feel like one of our favorite artists, Ilse Buchert Nesbitt, that "art should uplift". To that end, the work that we carry enhances and beautifies spaces. Generally, the shows we host do not attempt to create conversation relating to political or social situations in our world today. The style we focus on is abstract contemporary.

In terms of policies on work that we accept, as we are a family-friendly gallery, we limit the amount of nude work that comes in the door. We also do not wish to display work that makes grand political, religious or social statements, preferring to beautify our walls and provide refreshment to viewers, than to engage in deep conversations via the work about the state of the world. We hope you will find the work we display encouraging and uplifting.



# GALLERY SITKA.COM

GALLERY SITKA™  
2 SHAKER ROAD, D101  
SHIRLEY, MA 01464

978.425.6290  
OFFICE@GALLERY SITKA.COM  
WWW.GALLERY SITKA.COM