

Gallery

SITKA™

GALLERY SITKA REPRESENTED ARTIST

DANIEL SENIE

For questions about purchasing the artwork,
please call 978.425.6290 or contact office@galleriesitka.com.

Catalog printed in July 2021. The prices, information,
and availability are subject to change.

View all artwork online at
GALLERYSITKA.COM

#SupportTheArts

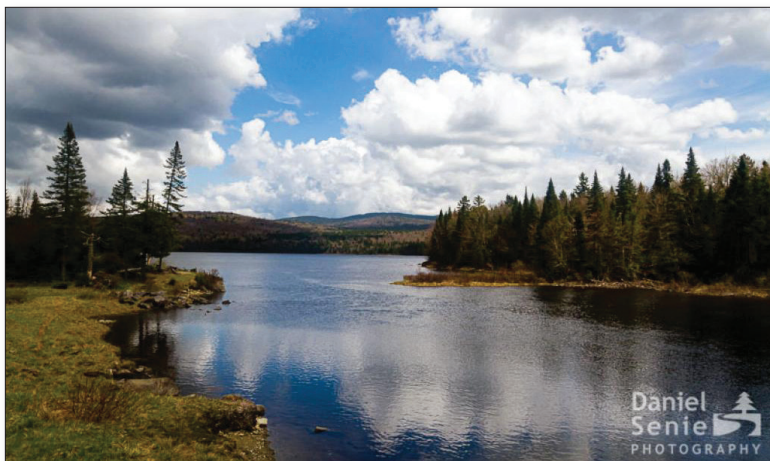
PHOTOGRAPHY BY

DANIEL SENIE



Desert Sky

by Daniel Senie
Metal Print
20" x 30"
\$325



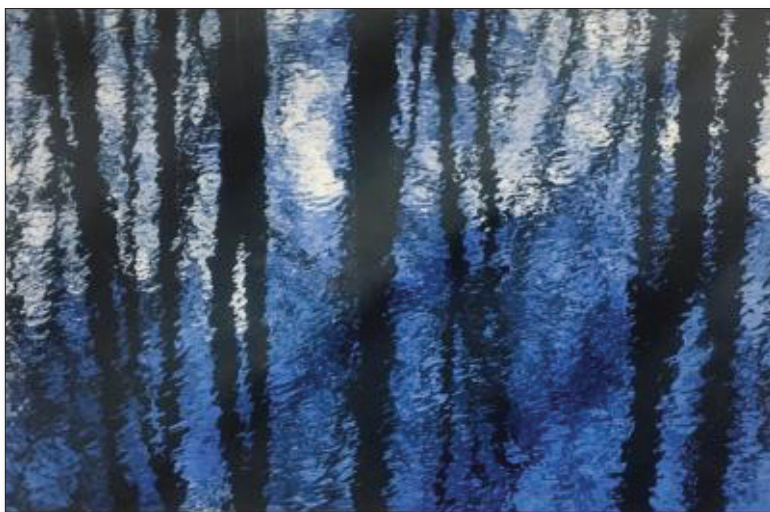
First Lake

by Daniel Senie
Metal Print
20" x 30"
\$325



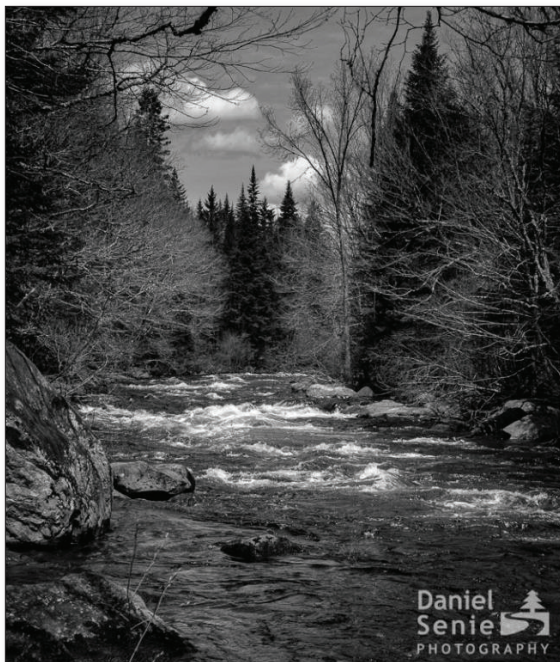
Independence Monument

by Daniel Senie
Metal Print
20" x 30"
\$325



Reflections on Vernal Pond

by Daniel Senie
Metal Print
12" x 18"
\$195

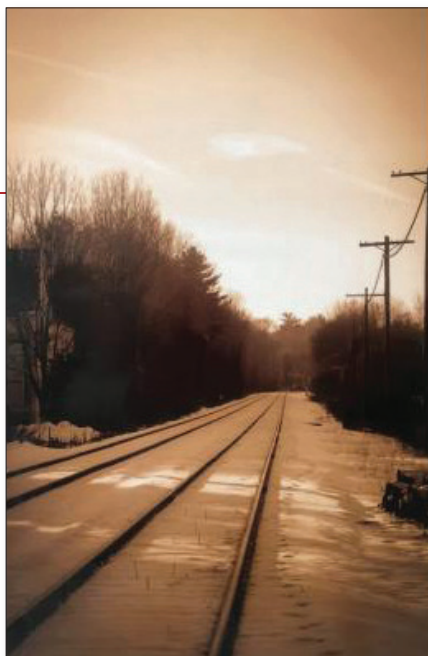


Connecticut Headwaters

by Daniel Senie
Metal Print
30" x 20"
\$325

Faded Memories

by Daniel Senie
Metal Print
18" x 12"
\$195





Peace Lily

by Daniel Senie
Metal Print
30" x 20"
\$325

Flame Tulip

by Daniel Senie
Metal Print
18" x 12"
\$195





Nature's Ice Sculpture

by Daniel Senie
Metal Print
18" x 12"
\$195

Moonshine

by Daniel Senie
Metal Print
16" x 16"
\$160



ARTIST'S BIOGRAPHY — DANIEL SENIE

Daniel Senie is a photographer, singer/songwriter, and outdoor enthusiast. Having grown up in both the Berkshire Hills of western Massachusetts and in the concrete canyons of New York City, he finds interesting subjects in both urban and natural environments. Whether it is the golden light of the fading fall, the shades of blue of the ocean deep, or the architectural detail of the urban landscape, he delights in the play of light and color that create images of depth and beauty.

When not found with a camera in hand, there's a good chance a guitar, harmonica, or other instruments will be involved. He and his wife, Faith, perform regionally, singing their original songs and select covers.

Born: Queens, NY | 1961

Studio: New Hampshire

ARTIST'S STATEMENT

"At an early age, I saved all my allowance until I could buy my first real camera, a 35mm SLR. From that time I have been fascinated by the camera's unique ability to portray light and shadow. I feel it important for the images I make to do more than document an event or object at some point in time. Images should tell a story. Composition leads the viewer's eye through that story and explains the vision of the photographer. When I take a photograph, I am concerned about the light and shadow, the foreground and background, color, and contrast.

"Scenic and wildlife photography has been my primary interest for many years. Capturing the beauty of nature in the large and small scale is a way to remind viewers to slow down and look around in this hectic world. In the last few years I have been exploring the world of natural abstracts, where the interplay of light, shadow, and reflection create something truly magical."



Daniel Senie

[READ MORE AT GALLERYSITKA.COM/DANIEL-SENIE](http://GALLERYSITKA.COM/DANIEL-SENIE)

HISTORY OF GALLERY SITKA

Gallery Sitka™ opened in May 2014 and was part of Sitka Creations®, a design studio. We adopted the name Gallery Sitka™ in August of 2015.

We opened another location on Friday, July 8, 2016, in downtown Fitchburg, MA. Our Ribbon Cutting was at 10 AM on July 8th and our Grand Opening and Solo Reception for Gosha Karpowicz was on July 9th from 1-4 PM. On December 1st, 2018 we closed our Fitchburg location. On June 15, 2019 we opened a tiny gallery in Shelburne Falls, MA which we closed on November 1, 2019. We currently operate out of our Shirley, MA mill space at The Phoenix Park.

We hold art exhibits in our space in Shirley. We also manage the Artist's Walkway at The Bull Run in Shirley, MA, as well as a number of other restaurants and offices in New England and in NYC.

MISSION

Our mission is to support the arts, to be part of the creative economy and provide a space for emerging artists to be seen and to have the experience of showing their work in a gallery-style atmosphere.

In terms of the style that we wish to share with the public, we feel like one of our favorite artists, Ilse Buchert Nesbitt, that "art should uplift". To that end, the work that we carry enhances and beautifies spaces. Generally, the shows we host do not attempt to create conversation relating to political or social situations in our world today. The style we focus on is abstract contemporary.

In terms of policies on work that we accept, as we are a family-friendly gallery, we limit the amount of nude work that comes in the door. We also do not wish to display work that makes grand political, religious or social statements, preferring to beautify our walls and provide refreshment to viewers, than to engage in deep conversations via the work about the state of the world. We hope you will find the work we display encouraging and uplifting.



GALLERY SITKA.COM

GALLERY SITKA™
2 SHAKER ROAD, D101
SHIRLEY, MA 01464

978.425.6290
OFFICE@GALLERY SITKA.COM
WWW.GALLERY SITKA.COM