

Gallery

SITKA™

GALLERY SITKA REPRESENTED ARTIST

DAWN HALEY MORTON

For questions about purchasing the artwork,
please call 978.425.6290 or contact office@galleriesitka.com.

Catalog printed in July 2021. The prices, information,
and availability are subject to change.

View all artwork online at
GALLERYSITKA.COM

#SupportTheArts

PHOTOGRAPHY BY

DAWN HALEY MORTON

Different print sizes for most pieces are available upon asking.



Alewife Tunnel

by Dawn Haley Morton
Framed Print
14" x 14"
\$145



Alewife Wall

by Dawn Haley Morton
Framed Print
14" x 14"
\$145



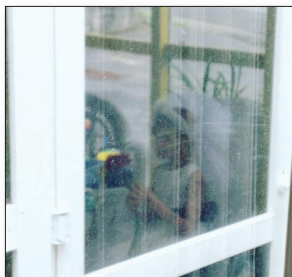
Campus Train

by Dawn Haley Morton
Framed Print
14" x 14"
\$145



Rest Stop Soap

by Dawn Haley Morton
Framed Print
14" x 14"
\$145



Junior Bride In Waiting

by Dawn Haley Morton
Print
14" x 14"
\$145



Gargoyle Package Service

by Dawn Haley Morton
Framed Print
14" x 14"
\$145



Angel Goatee

by Dawn Haley Morton
Framed Print
14" x 14"
\$145



Love MIT

by Dawn Haley Morton
Framed Print
13" x 16"
\$175



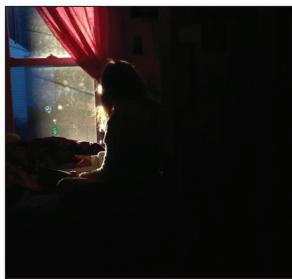
Dock Glove

by Dawn Haley Morton
Framed Print
14" x 14"
\$145



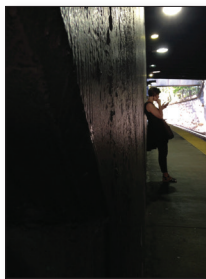
Ladies & Men

by Dawn Haley Morton
Framed Print
18" x 22"
\$175



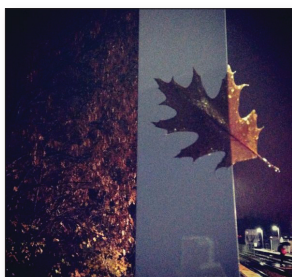
Bright Sun

by Dawn Haley Morton
Framed Print
14" x 14"
\$145



Waiting for Train

by Dawn Haley Morton
Framed Print
16" x 13"
\$175



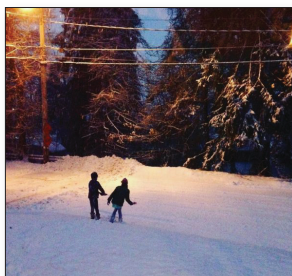
Fall Leaf

by Dawn Haley Morton
Framed Print
14" x 14"
\$145



How Kids Spend Time

by Dawn Haley Morton
Framed Print
14" x 14"
\$145



Girl's Snow

by Dawn Haley Morton
Framed Print
14" x 14"
\$145



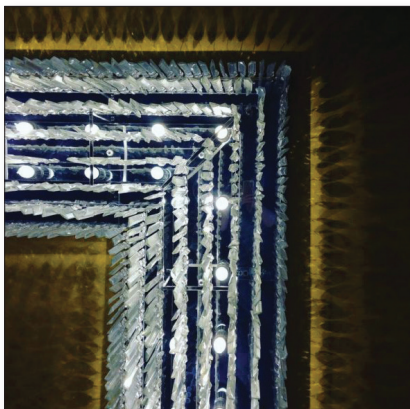
Babies Watch Whale

by Dawn Haley Morton
Framed Print
14" x 14"
\$145



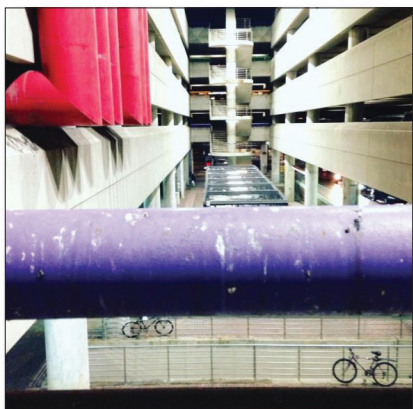
Accidental Poetry

by Dawn Haley Morton
Framed Print
14" x 14"
\$145



Crystal Illumination

by Dawn Haley Morton
Framed Print
14" x 14"
\$145



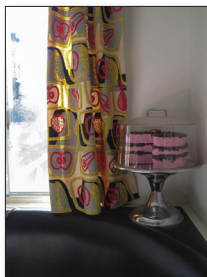
Level 4

by Dawn Haley Morton
Framed Print
11" x 11"
\$135



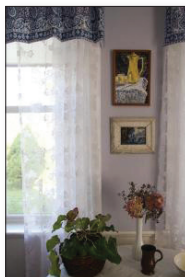
Alien Frost

by Dawn Haley Morton
Framed Print
14" x 14"
\$145



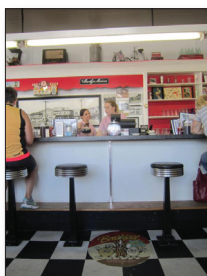
Cake & Banquette

by Dawn Haley Morton
Framed Print
22" x 18"
\$175



Inn at Round Pond

by Dawn Haley Morton
Framed Print
22" x 18"
\$175



Breen's Diner

by Dawn Haley Morton
Framed Print
22" x 18"
\$175



Vintage Stovetop

by Dawn Haley Morton
Framed Print
22" x 18"
\$175



Restaurant

by Dawn Haley Morton
Framed Print
18" x 22"
\$175

ARTIST'S BIOGRAPHY — DAWN HALEY MORTON

Dawn Haley Morton has had a camera in her possession since 7th grade. The novelty of shooting with the 110 camera and a 'flip flash' wore off and she got her first 35mm camera in 11th grade.

Dawn's work began as a form of self-expression. She has shown her work since 1985 at festivals and art shows. In 2007 and 2008, Dawn's work appeared in 2-person shows in Boston and Gardner, MA with her husband, painter Dug Morton.

Dawn published an annual calendar of her photographs from 2001-2015. It began as a wall calendar, moving later to a more intimate tabletop design.

While working full time in film and television production and raising their daughter with her husband Dug, Dawn has also worked as an event and portrait photographer. Whether it's a wedding, corporate event, or a high school senior portrait, Dawn enjoys capturing the world in a documentary style that is different from the commercial photographers.

Aside from traditional art venues, Dawn has moved into the digital realm and enjoys sharing life's moments on Instagram, a forum that truly represents her spirit and most prevalent style as a photographer.

Born: New Jersey

Studio: Lunenburg, MA

ARTIST'S STATEMENT

"Photography seems to be a reflection of what is within a person, their likes, interests, and what motivates or fascinates them. It's about harnessing that which amazes us, tells a story, or makes us smile. As one grows older, tastes and observations change.

"I thoroughly enjoy doing portrait work, it is a blend between the subject's personality and my own sense of composition and art. It's an effort on both parties to bring to life a visual biography of who they are.

"I am an explorer, capturing the unexpected day-to-day in documentary style is sheer joy. Snapping a moment out of time that can never be replicated is a visual treasure. My true house style is represented in the blending of texture, color, humor, and awe of my subject matter. I enjoy capturing a moment that evokes an emotion.



Dawn Haley Morton

"A big milestone in your life, a nature hike, vintage market surfing, eating, relaxing, living... if we could bottle it up and keep it forever, we would. This is what I do... procure a visual slice of a feeling on a screen or paper, teleporting you to a place or sensation. This makes me happy. I hope it does the same for you when you experience my work."

[READ MORE AT GALLERYSTITKA.COM/DAWN-HALEY-MORTON](http://GALLERYSTITKA.COM/DAWN-HALEY-MORTON)

HISTORY OF GALLERY SITKA

Gallery Sitka™ opened in May 2014 and was part of Sitka Creations®, a design studio. We adopted the name Gallery Sitka™ in August of 2015.

We opened another location on Friday, July 8, 2016, in downtown Fitchburg, MA. Our Ribbon Cutting was at 10 AM on July 8th and our Grand Opening and Solo Reception for Gosha Karpowicz was on July 9th from 1-4 PM. On December 1st, 2018 we closed our Fitchburg location. On June 15, 2019 we opened a tiny gallery in Shelburne Falls, MA which we closed on November 1, 2019. We currently operate out of our Shirley, MA mill space at The Phoenix Park.

We hold art exhibits in our space in Shirley. We also manage the Artist's Walkway at The Bull Run in Shirley, MA, as well as a number of other restaurants and offices in New England and in NYC.

MISSION

Our mission is to support the arts, to be part of the creative economy and provide a space for emerging artists to be seen and to have the experience of showing their work in a gallery-style atmosphere.

In terms of the style that we wish to share with the public, we feel like one of our favorite artists, Ilse Buchert Nesbitt, that "art should uplift". To that end, the work that we carry enhances and beautifies spaces. Generally, the shows we host do not attempt to create conversation relating to political or social situations in our world today. The style we focus on is abstract contemporary.

In terms of policies on work that we accept, as we are a family-friendly gallery, we limit the amount of nude work that comes in the door. We also do not wish to display work that makes grand political, religious or social statements, preferring to beautify our walls and provide refreshment to viewers, than to engage in deep conversations via the work about the state of the world. We hope you will find the work we display encouraging and uplifting.



GALLERY SITKA.COM

GALLERY SITKA™
2 SHAKER ROAD, D101
SHIRLEY, MA 01464

978.425.6290
OFFICE@GALLERY SITKA.COM
WWW.GALLERY SITKA.COM