

Gallery

SITKA™

GALLERY SITKA REPRESENTED ARTIST

ELIZABETH HUGHES

For questions about purchasing the artwork,
please call 978.425.6290 or contact office@galleriesitka.com.

Catalog printed in July 2021. The prices, information,
and availability are subject to change.

View all artwork online at
GALLERYSITKA.COM

#SupportTheArts

PAINTINGS BY

ELIZABETH HUGHES

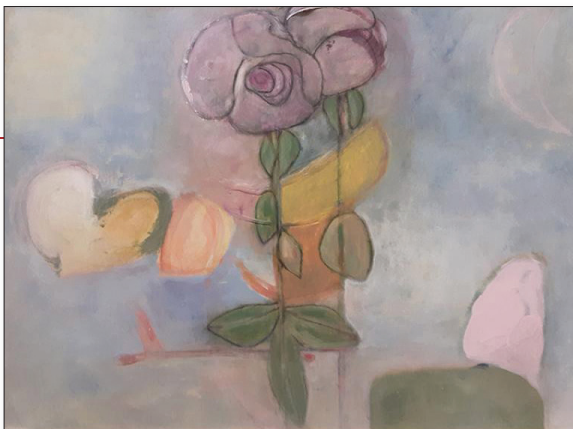


A Good Year For The Roses, 2020

by Elizabeth Hughes
Acrylic on Canvas
20" x 16" x 1"
\$625

Bloom, 2018

by Elizabeth Hughes
Acrylic on Canvas
16" x 24" x 1"
\$575





Distant Pair, 2015

by Elizabeth Hughes
Monoprint
24" x 20"
\$325

Distant Pair II, 2015

by Elizabeth Hughes
Monoprint
24" x 20"
\$325



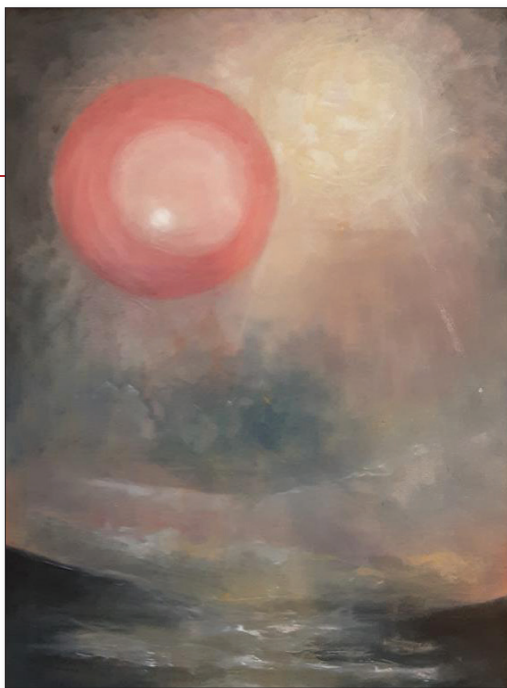


End of Day, 2019

by Elizabeth Hughes
Acrylic on Canvas
18" x 24" x 1"
\$625

Following the Light, 2019

by Elizabeth Hughes
Acrylic on Canvas
24" x 18" x 1"
\$625





Instinct, 2015

by Elizabeth Hughes
Acrylic and Pencil
35" x 23" x 1/2"
\$775

Let The Heart Open To The Light A Little, 2018

by Elizabeth Hughes
Acrylic on Canvas
24" x 18" x 1"
\$625





Surviving Tree, 2020

by Elizabeth Hughes
Acrylic on Canvas
20" x 16" x 1"
\$625

Too Far From Shore, 2015

by Elizabeth Hughes
Acrylic on Canvas
30" x 24" x 1"
\$775



ARTIST'S BIOGRAPHY & STATEMENT — ELIZABETH HUGHES

I began my adventure of artistic expression first as a dancer, then as a writer and poet. In my painting, I stay connected to the rhythm, form, and emotion that I first encountered dancing. Later on, my writing taught me how to let word influence my work as a visual artist.

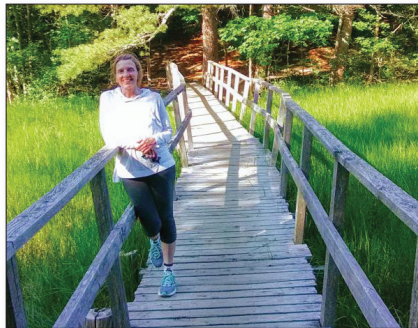
"I moved into visual art after visiting Mexico in 1993 to study Frida Kahlo on a Kinnicutt Grant from the Worcester Art Museum. I have studied collage, printmaking, drawing, and painting at The Worcester Art Museum. I continue to study, explore, and learn with each new piece — each new destination on my creative journey.

"I am drawn to the exploration of the external and internal landscape. Using color and shape to interpret these landscapes — one of nature and another of the mind — I hope to convey a moment, a place, an emotion in time that edges toward the timeless. I feel the mystical in the landscape and in the creative process. It can be challenging to get this elusive quality down on paper or canvas within the confines of the chosen medium. I sometimes seem to lack the skill, the discipline, the faith to capture this feeling of timelessness. Yet I persevere toward communication with, and connection to, a sublime intimation of truth and beauty.

"I have exhibited at many venues over the last 25 years, primarily in Massachusetts and Rhode Island. Currently I have work at Roughan McCarthy in Newport, and at The Fuller Gallery in Jamestown, R.I. My work can be found periodically in shows at The Portsmouth Arts Guild in Portsmouth, R.I., and at Spring Bull Gallery in Newport."

Born: Los Angeles, CA | 1960

Studio: Newport, RI



Elizabeth Hughes

[READ MORE AT GALLERYSITKA.COM/ELIZABETH-HUGHES](https://www.galleriesitka.com/elizabeth-hughes)

HISTORY OF GALLERY SITKA

Gallery Sitka™ opened in May 2014 and was part of Sitka Creations®, a design studio. We adopted the name Gallery Sitka™ in August of 2015.

We opened another location on Friday, July 8, 2016, in downtown Fitchburg, MA. Our Ribbon Cutting was at 10 AM on July 8th and our Grand Opening and Solo Reception for Gosha Karpowicz was on July 9th from 1-4 PM. On December 1st, 2018 we closed our Fitchburg location. On June 15, 2019 we opened a tiny gallery in Shelburne Falls, MA which we closed on November 1, 2019. We currently operate out of our Shirley, MA mill space at The Phoenix Park.

We hold art exhibits in our space in Shirley. We also manage the Artist's Walkway at The Bull Run in Shirley, MA, as well as a number of other restaurants and offices in New England and in NYC.

MISSION

Our mission is to support the arts, to be part of the creative economy and provide a space for emerging artists to be seen and to have the experience of showing their work in a gallery-style atmosphere.

In terms of the style that we wish to share with the public, we feel like one of our favorite artists, Ilse Buchert Nesbitt, that "art should uplift". To that end, the work that we carry enhances and beautifies spaces. Generally, the shows we host do not attempt to create conversation relating to political or social situations in our world today. The style we focus on is abstract contemporary.

In terms of policies on work that we accept, as we are a family-friendly gallery, we limit the amount of nude work that comes in the door. We also do not wish to display work that makes grand political, religious or social statements, preferring to beautify our walls and provide refreshment to viewers, than to engage in deep conversations via the work about the state of the world. We hope you will find the work we display encouraging and uplifting.



GALLERY SITKA.COM

GALLERY SITKA™
2 SHAKER ROAD, D101
SHIRLEY, MA 01464

978.425.6290
OFFICE@GALLERY SITKA.COM
WWW.GALLERY SITKA.COM