

Gallery

SITKA™

GALLERY SITKA REPRESENTED ARTIST

JEANNE BOROFSKY

For questions about purchasing the artwork,
please call 978.425.6290 or contact office@galleriesitka.com.

Catalog printed in July 2021. The prices, information,
and availability are subject to change.

View all artwork online at
GALLERYSITKA.COM

#SupportTheArts

ENCAUSTIC BY

JEANNE BOROFSKY



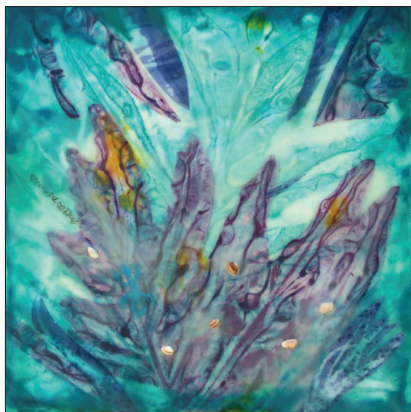
Circle Deep

by Jeanne Borofsky
Encaustic
6.25" x 6.25"
\$135



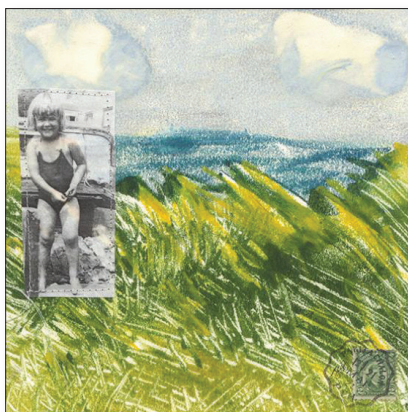
Seeing Through Traps

by Jeanne Borofsky
Encaustic on Panel
12" x 12"
\$275



Purple Sea

by Jeanne Borofsky
Encaustic
10" x 10"
\$250



Swimming!

by Jeanne Borofsky
Encaustic Monotype
8" x 8" Matted in a 12" x 12" Black Frame
\$125



Royal Blue

by Jeanne Borofsky
Monotype
11" x 11"
\$50



Black and Blue

by Jeanne Borofsky
Monotype
8" x 8"
\$50



Patchwork

by Jeanne Borofsky
Monotype
11" x 11"
\$50



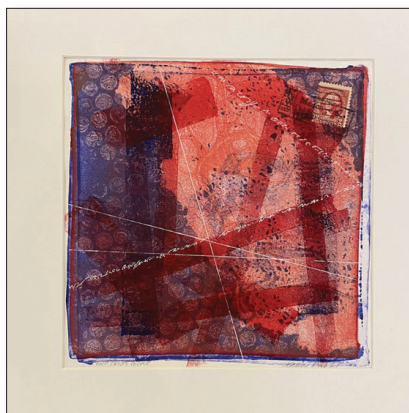
Park Rose

by Jeanne Borofsky
Monotype
11" x 11"
\$50



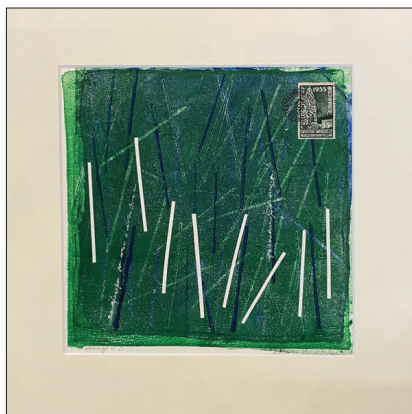
Luft

by Jeanne Borofsky
Monotype
11" x 11"
\$50



2 Cents More

by Jeanne Borofsky
Monotype
11" x 11"
\$50



Homage á D.

by Jeanne Borofsky
Monotype
11" x 11"
\$50



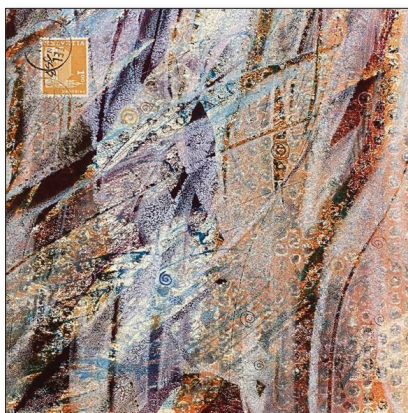
Circle of Life

by Jeanne Borofsky
Unframed Monotype
8" x 8"
SOLD



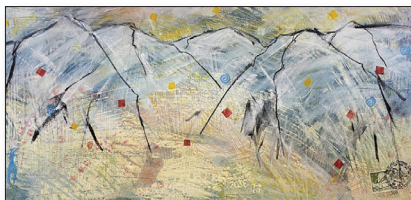
Crevasse

by Jeanne Borofsky
Unframed Monotype
11" x 11"
\$50



No Name

by Jeanne Borofsky
Unframed Encaustic Monotype
9" x 9"
\$50



The Range

by Jeanne Borofsky
Encaustic Monotype
18" x 10"
\$80



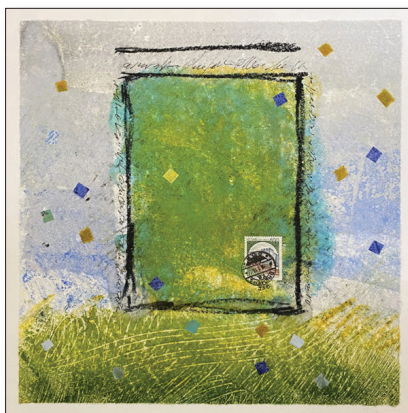
City Block #4

by Jeanne Borofsky
Encaustic Sculpture
5" x 2" x 2"
\$125



Artistico

by Jeanne Borofsky
Framed Encaustic Monotype
22" x 30"
SOLD



Monolith in Green

by Jeanne Borofsky
Encaustic Monotype
11" x 11"
\$50



Raging Seas

by Jeanne Borofsky
Encaustic Monotype
12" x 14"
\$225



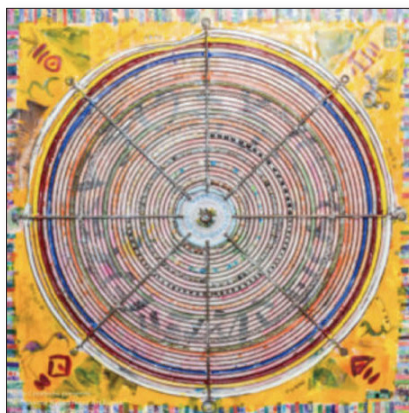
Buttressed X

by Jeanne Borofsky
Framed Encaustic Monoprint
11" x 11"
\$250



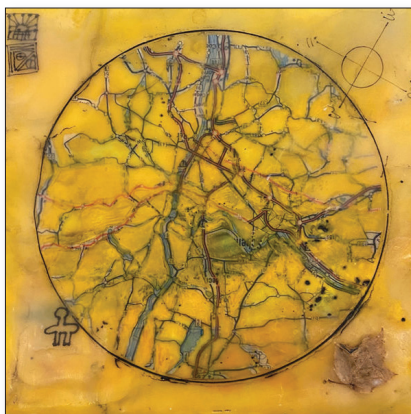
East Post World

by Jeanne Borofsky
Encaustic on Panel
9" x 9"
\$175



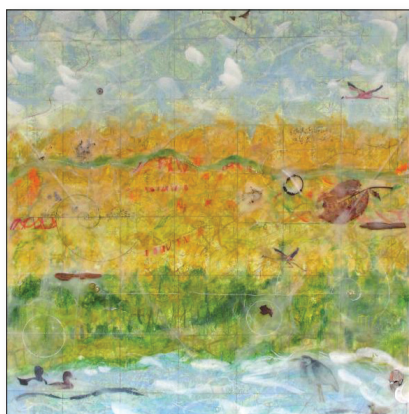
Conditional Spirals

by Jeanne Borofsky
Encaustic on Panel
26" x 26"
\$800



The Roads

by Jeanne Borofsky
Encaustic on Board
6" x 6"
\$125



Autumn Map of Birdland

by Jeanne Borofsky
Encaustic on Panel
18" x 18"
\$400



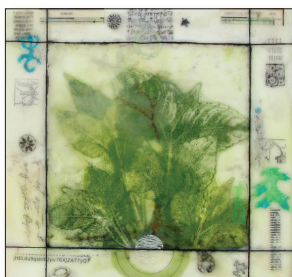
F Major

by Jeanne Borofsky
Encaustic
10" x 10"
\$250



Beetle Buttress

by Jeanne Borofsky
Unframed Monotype
9" x 9"
\$50



Forget

by Jeanne Borofsky
Encaustic
10" x 10"
\$250



Flamingos

by Jeanne Borofsky
Encaustic on Board
6" x 6"
\$150



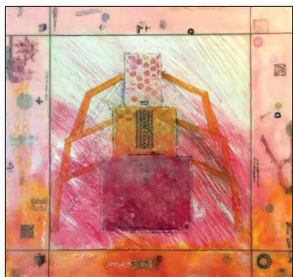
The Net

by Jeanne Borofsky
Encaustic Collage
8" x 7"
\$200



Time & Tide Diptych

by Jeanne Borofsky
Encaustic
5" x 10"
\$225



Betty Buttress

by Jeanne Borofsky
Encaustic on Panel
16" x 16"
\$400



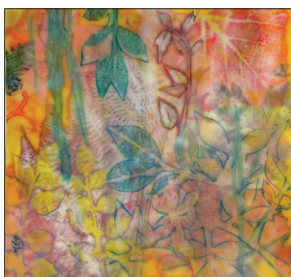
Fourteen

by Jeanne Borofsky
Encaustic on Panel
5" x 5"
\$125



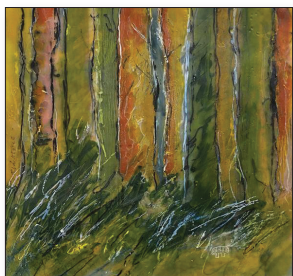
Red Dervish

by Jeanne Borofsky
Encaustic on Panel
6" x 6"
\$150



Local Jungle

by Jeanne Borofsky
Monotype Encaustic
12" x 12"
SOLD



Undergrowth

by Jeanne Borofsky
Encaustic
10" x 10"
\$250



Bluster Blue

by Jeanne Borofsky
Encaustic on Panel
12" x 12"
\$275



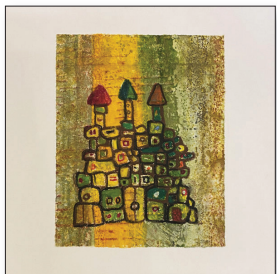
Keep The Jar

by Jeanne Borofsky
Encaustic on Panel
10" x 10"
\$250



Red Confetti

by Jeanne Borofsky
Encaustic Monotype
6" x 6"
\$25



Three Tower Castle

by Jeanne Borofsky
Monotype
11" x 11"
\$50



Conservatory

by Jeanne Borofsky
Encaustic Monotype & Origami
Assemblage on Panel
20" x 20"
\$650



City of the 5 Dragons

by Jeanne Borofsky
Encaustic Monotype & Origami
Assemblage on Panel
18" x 36"
\$675

ARTIST'S BIOGRAPHY — JEANNE BOROFSKY

Jeanne Borofsky, BFA, MFA, is internationally recognized, with paintings, prints, and drawings in numerous museums and private collections. She was born in New Hampshire, and after several moves settled in Groton with her husband Jerr. They have two grown children, Nate and Anna. Jeanne has been a practicing artist for over 50 years. She has (and does) make art with watercolors, oils, encaustics, rubber stamps, collages, and prints (traditional, photographic, encaustic & digital). Represented by Gallery Sitka and Gallery Twist, a member of The Boston Printmakers, the Depot Square Artists, the Monotype Guild of New England, and New England Wax (past president), Jeanne has also been a digital imaging specialist and graphic designer.

Born: Plymouth, NH | 1944
Studio: Groton, MA

ARTIST'S STATEMENT

"Most of my current work is encaustic collage. Encaustic—painting with hot colored beeswax and damar resin—is a medium that was used by the ancient Greeks as far back as 400 BC.

"Having grown up in the country I have always looked to nature to center myself, and to restore balance to my mind and my world. I spend time in the woods or by the water letting the rhythms of the world become part of me.

"My encaustic constructions usually start with encaustic monotypes. There is a monotype mounted to the panel, and I add origami boxes folded mostly from more encaustic monotypes. I spend a lot of my time folding, which is a kind of meditation, and then more time constructing and adding stamps, maps, bits of asemic writing and other ephemera to create my own world. I have often felt the way Alexander Calder felt when he said, 'I want to make things that are fun to look at, that have no propaganda value whatsoever.'

"I love the way beeswax creates both physical and visual depth and translucency to the work – adding to the mystery and magic I'm trying to convey. Whatever I put into my art, it always includes the joy of creation, the love of art, and the happiness in my ability to create it."



Jeanne Borofsky

[READ MORE AT GALLERYSITKA.COM/JEANNE-BOROFSKY](https://www.galleriesitka.com/jeanne-borofsky)

HISTORY OF GALLERY SITKA

Gallery Sitka™ opened in May 2014 and was part of Sitka Creations®, a design studio. We adopted the name Gallery Sitka™ in August of 2015.

We opened another location on Friday, July 8, 2016, in downtown Fitchburg, MA. Our Ribbon Cutting was at 10 AM on July 8th and our Grand Opening and Solo Reception for Gosha Karpowicz was on July 9th from 1-4 PM. On December 1st, 2018 we closed our Fitchburg location. On June 15, 2019 we opened a tiny gallery in Shelburne Falls, MA which we closed on November 1, 2019. We currently operate out of our Shirley, MA mill space at The Phoenix Park.

We hold art exhibits in our space in Shirley. We also manage the Artist's Walkway at The Bull Run in Shirley, MA, as well as a number of other restaurants and offices in New England and in NYC.

MISSION

Our mission is to support the arts, to be part of the creative economy and provide a space for emerging artists to be seen and to have the experience of showing their work in a gallery-style atmosphere.

In terms of the style that we wish to share with the public, we feel like one of our favorite artists, Ilse Buchert Nesbitt, that "art should uplift". To that end, the work that we carry enhances and beautifies spaces. Generally, the shows we host do not attempt to create conversation relating to political or social situations in our world today. The style we focus on is abstract contemporary.

In terms of policies on work that we accept, as we are a family-friendly gallery, we limit the amount of nude work that comes in the door. We also do not wish to display work that makes grand political, religious or social statements, preferring to beautify our walls and provide refreshment to viewers, than to engage in deep conversations via the work about the state of the world. We hope you will find the work we display encouraging and uplifting.



GALLERY SITKA.COM

GALLERY SITKA™
2 SHAKER ROAD, D101
SHIRLEY, MA 01464

978.425.6290
OFFICE@GALLERY SITKA.COM
WWW.GALLERY SITKA.COM