



GALLERY SITKA REPRESENTED ARTIST

KATE SHAFFER

For questions about purchasing the artwork,
please call 978.425.6290 or contact office@galleriesitka.com.

Catalog printed in July 2021. The prices, information,
and availability are subject to change.

View all artwork online at
GALLERYSITKA.COM

#SupportTheArts

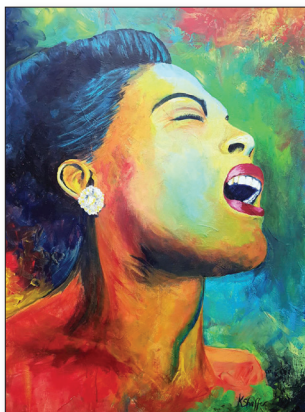
PAINTINGS BY

KATE SHAFFER



Betty Carter

by Kate Shaffer
Acrylic on Canvas
36" x 24"
\$1,750



Billie Holiday

by Kate Shaffer
Acrylic on Canvas
36" x 24"
\$1,750



Dinah Washington

by Kate Shaffer
Acrylic on Canvas
36" x 24"
\$1,750



Ella Fitzgerald

by Kate Shaffer
Acrylic on Canvas
36" x 24"
\$1,750



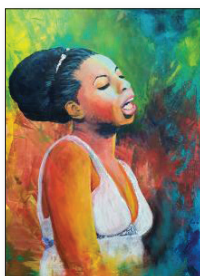
Etta James

by Kate Shaffer
Acrylic on Canvas
36" x 24"
\$1,750



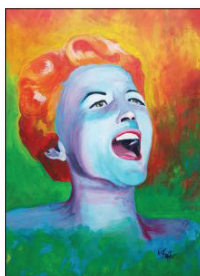
Nancy Wilson

by Kate Shaffer
Acrylic on Canvas
36" x 24"
\$1,750



Nina Simone

by Kate Shaffer
Acrylic on Canvas
36" x 24"
\$1,750



Peggy Lee

by Kate Shaffer
Acrylic on Canvas
36" x 24"
\$1,750



Sarah Vaughan

by Kate Shaffer
Acrylic on Canvas
36" x 24"
\$1,750



Shirley Horn

by Kate Shaffer
Acrylic on Canvas
36" x 24"
\$1,750



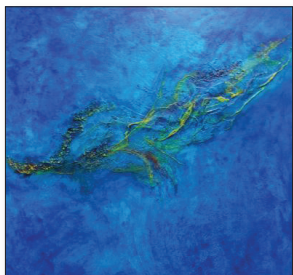
Yellow Iris

by Kate Shaffer
Acrylic
20" x 20"
\$495



Joy Comes in the Morning

by Kate Shaffer
Mixed Media
40" x 60"
\$4,000



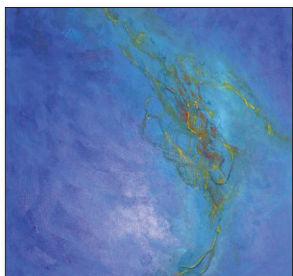
Island 1

by Kate Shaffer
Mixed Media on Birch Panel
36" x 36"
\$2,590



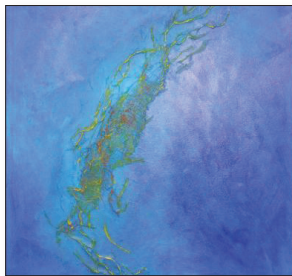
Island 2

by Kate Shaffer
Mixed Media on Birch Panel
36" x 36"
\$2,590



Island 3

by Kate Shaffer
Mixed Media on Birch Panel
24" x 24"
\$1,190



Island 4

by Kate Shaffer
Mixed Media on Birch Panel
24" x 24"
\$1,190



Equinox

by Kate Shaffer
Mixed Media
24" x 36"
\$1,100



Island Oasis

by Kate Shaffer
Mixed Media
24" x 36"
SOLD



Take Me to the Islands 1

by Kate Shaffer
Mixed Media
12" x 12"
\$150



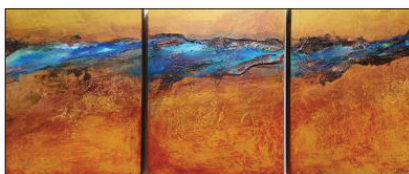
Pepto Pink

by Kate Shaffer
Mixed Media
12" x 12"
\$150



Washed Away

by Kate Shaffer
Mixed Media
24" x 36"
\$1,090



Landscape Triptych

by Kate Shaffer
Acrylic on Canvas
N/A
\$950



The Vortex

by Kate Shaffer
Acrylic on Canvas
N/A
\$2,590



Worrisome Heart

by Kate Shaffer
Acrylic on Canvas
N/A
\$1,750

ARTIST'S BIOGRAPHY — KATE SHAFFER

Kate Shaffer was born in central New York and lived on a farm until the age of 10. Kate Shaffer has loved creating her entire life. Texture, color, and the process of "making" has always been a passion. It was after her youngest daughter left home that Ms. Shaffer embraced the "empty nest" to begin a new chapter in her life, that of a professional artist. She paints with joy and exuberance bringing her love of texture, color, and the combining of elements to her work. Ms. Shaffer is inspired by nature but also wants to show the emotions of life in her work. Using texture to show the ups and downs of the "texture" of life and color representation to symbolize the emotions we all experience as we traverse the terrain, she hopes to bring to the viewer a balance of the joy there is to find in the midst of increasingly fearful and tumultuous times.

Her techniques come from much experimentation and exploration of different media. Using a "no fear" approach, the biggest question for Ms. Shaffer is always "what if". One experiment leads to more questions and more exploration. The never-ending process is what keeps her fascinated and keeps expanding her "palette" of media.

Ms. Shaffer has exhibited in local art shows and in her own gallery at 205 School Street in Gardner, MA. She has won two honorable mentions in her first two years of being a professional artist. Ms. Shaffer belongs to both the Gardner Area League of Artists and the Fitchburg Art Museum. She has a studio/gallery with twelve other artists in a community named the School Street Art Studios. The School Street Artists have an annual Open Studio event on the second Friday of October.

Born: Cortland, NY | 1957

Studio: Ashburnham, MA

ARTIST'S STATEMENT

"Only half of what an artist does is for themselves, the other half is to speak to the world and share their hearts. Many people wonder why an artist does art. For myself, I do it to express the joy, hope and wonder I see all around me. The world, with all its brokenness, is still a world of wonder. It is that which I speak to through my art. The many layers of media that I add to my canvas expresses the layers, both positive and negative, that we find in life. Some of them are a little grungy, some torn, and some rich in color, but all are full of the intricacies that only happen through the process of living our lives. It is through this process that we find the beauty that emerges from those intricacies. I am greatly inspired by nature, but it is the process of making the art that inspires me the most.

"In life, as we go through the day to day activities and then find ourselves, suddenly, in that perfect moment; so I am with my art. I begin to lay down my first layers and then respond to those as I lay down the next. As I proceed, the layers begin to combine and become the "moments" that reveal a subject I respond to and build upon. The work of any artist is unique because each artist is a unique individual. My process and the way I use the tools of my trade are what make my work my own. I love texture, color, and the interactions that happen on the canvas. How the individual media responds to each other is always a source of surprise, like opening a present each and every time.

"Doing my art allows me to share some of my heart with others. As with so many others, life has given me difficulties, heartbreaks, and painful experiences. My art is my way to claim joy in the midst of those difficulties."



Kate Shaffer

[READ MORE AT GALLERYSITKA.COM/KATE-SHAFFER](https://www.galleriesitka.com/kate-shaffer)

HISTORY OF GALLERY SITKA

Gallery Sitka™ opened in May 2014 and was part of Sitka Creations®, a design studio. We adopted the name Gallery Sitka™ in August of 2015.

We opened another location on Friday, July 8, 2016, in downtown Fitchburg, MA. Our Ribbon Cutting was at 10 AM on July 8th and our Grand Opening and Solo Reception for Gosha Karpowicz was on July 9th from 1-4 PM. On December 1st, 2018 we closed our Fitchburg location. On June 15, 2019 we opened a tiny gallery in Shelburne Falls, MA which we closed on November 1, 2019. We currently operate out of our Shirley, MA mill space at The Phoenix Park.

We hold art exhibits in our space in Shirley. We also manage the Artist's Walkway at The Bull Run in Shirley, MA, as well as a number of other restaurants and offices in New England and in NYC.

MISSION

Our mission is to support the arts, to be part of the creative economy and provide a space for emerging artists to be seen and to have the experience of showing their work in a gallery-style atmosphere.

In terms of the style that we wish to share with the public, we feel like one of our favorite artists, Ilse Buchert Nesbitt, that "art should uplift". To that end, the work that we carry enhances and beautifies spaces. Generally, the shows we host do not attempt to create conversation relating to political or social situations in our world today. The style we focus on is abstract contemporary.

In terms of policies on work that we accept, as we are a family-friendly gallery, we limit the amount of nude work that comes in the door. We also do not wish to display work that makes grand political, religious or social statements, preferring to beautify our walls and provide refreshment to viewers, than to engage in deep conversations via the work about the state of the world. We hope you will find the work we display encouraging and uplifting.



GALLERY SITKA.COM

GALLERY SITKA™
2 SHAKER ROAD, D101
SHIRLEY, MA 01464

978.425.6290
OFFICE@GALLERY SITKA.COM
WWW.GALLERY SITKA.COM