

Gallery

SITKA™

GALLERY SITKA REPRESENTED ARTIST

LAWRENCE LIBBY

For questions about purchasing the artwork,
please call 978.425.6290 or contact office@galleriesitka.com.

Catalog printed in July 2021. The prices, information,
and availability are subject to change.

View all artwork online at
GALLERYSITKA.COM

#SupportTheArts

PHOTOGRAPHY BY

LAWRENCE LIBBY

Different print sizes and formats for most pieces are available upon asking.



Repose

by Lawrence Libby
Digital Print on Metal
8" x 12"
\$120



Aster

by Lawrence Libby
Digital Print on Metal
8" x 12"
\$120



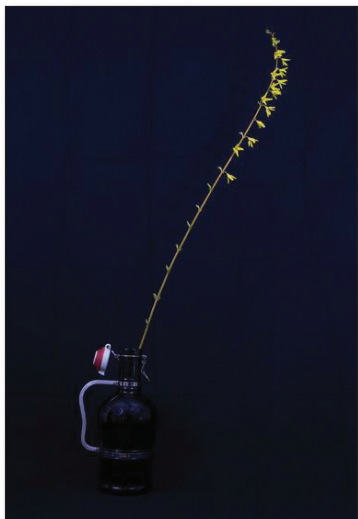
Awakening

by Lawrence Libby
Matted Print
11" x 14"
\$200



Tulips

by Lawrence Libby
Framed Metal Print
13" x 16"
\$160



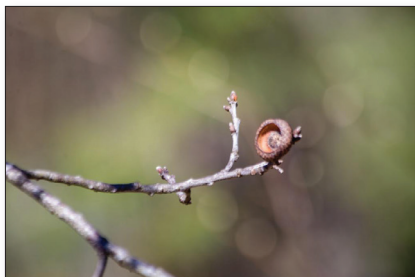
Crescendo

by Lawrence Libby
Matted Print
11" x 14"
\$200



Tiny Dancer

by Lawrence Libby
Matted Print
11" x 14"
\$200



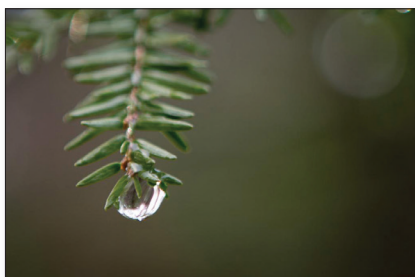
Acorn Cap

by Lawrence Libby
Matted Print
11" x 14"
\$200



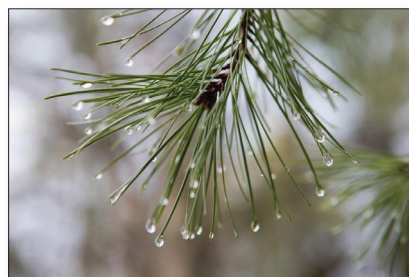
Nascent Forest

by Lawrence Libby
Matted Print
11" x 14"
\$200



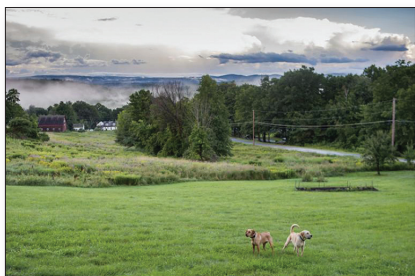
Lens

by Lawrence Libby
Matted Print
11" x 14"
\$200



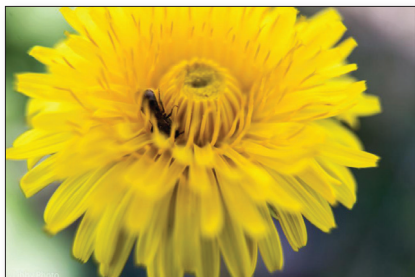
Drops

by Lawrence Libby
Matted Print
11" x 14"
\$200



Welcoming Committee

by Lawrence Libby
Framed Print
11" x 14"
\$160



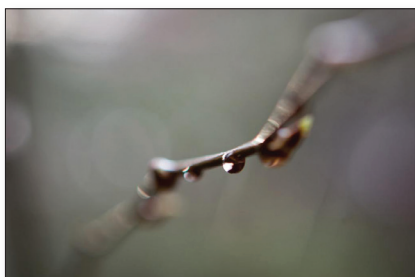
Bzzzz

by Lawrence Libby
Matted Print
11" x 14"
\$200



Forsythia

by Lawrence Libby
Matted Print
11" x 14"
\$200



Transition

by Lawrence Libby
Matted Print
11" x 14"
\$200



Seed Pod

by Lawrence Libby
Matted Print
11" x 14"
\$200



Melody

by Lawrence Libby
Matted Print
11" x 14"
\$200



Perseids

by Lawrence Libby
Matted Print
11" x 14"
\$200



From My Home to Yours

by Lawrence Libby
Matted Print
11" x 14"
\$200



Straight Up

by Lawrence Libby
Matted Print
11" x 14"
\$200

ARTIST'S BIOGRAPHY — LAWRENCE LIBBY

From his earliest years as an Army brat in Europe in the 1960s, Larry was exposed to Renaissance art, and Gothic and Roman architecture on an everyday basis. Back in the States at the age of 13, he took up photography. Entirely self-taught, by 19 he appropriated a bathroom in his parent's home to use as a darkroom. Living in the Washington DC area during his High School days, Larry often felt his education was better served by riding his bicycle to the National Gallery of Art or the Hirshhorn Museum of Modern Art, rather than attending scheduled classes. A two-decade fallow period followed.

With the invention of digital photography, Larry decided to try photography once again. He claims his major influences to be American only, Grant Wood is considered a Regionalist – better to say something like 20th-century American Realist and Modernist painters Regionalist painters such as Grant Wood, Georgia O'Keeffe, and Winslow Homer, along with great photographers such as Ansel Adams, Edward Steichen and Henri Cartier-Bresson, but it appears his deeper influences predate photography by many centuries. In addition to the Bull Run's Facebook page and Newsletter, Larry has had photographic work published on various musicians' websites and Facebook pages. He has also been published in the following periodicals: *Time Out New York*, *Time Out Chicago*, *Time Out Kiev* (Ukraine), *Newport (RI) Patch*, *Shirley Oracle*, and *Townsend Times*.

Born: Newton, MA | 1956
Studio: Townsend, MA



Lawrence Libby

[READ MORE AT GALLERYSITEKA.COM/LAWRENCE-LIBBY](http://GALLERYSITEKA.COM/LAWRENCE-LIBBY)

HISTORY OF GALLERY SITKA

Gallery Sitka™ opened in May 2014 and was part of Sitka Creations®, a design studio. We adopted the name Gallery Sitka™ in August of 2015.

We opened another location on Friday, July 8, 2016, in downtown Fitchburg, MA. Our Ribbon Cutting was at 10 AM on July 8th and our Grand Opening and Solo Reception for Gosha Karpowicz was on July 9th from 1-4 PM. On December 1st, 2018 we closed our Fitchburg location. On June 15, 2019 we opened a tiny gallery in Shelburne Falls, MA which we closed on November 1, 2019. We currently operate out of our Shirley, MA mill space at The Phoenix Park.

We hold art exhibits in our space in Shirley. We also manage the Artist's Walkway at The Bull Run in Shirley, MA, as well as a number of other restaurants and offices in New England and in NYC.

MISSION

Our mission is to support the arts, to be part of the creative economy and provide a space for emerging artists to be seen and to have the experience of showing their work in a gallery-style atmosphere.

In terms of the style that we wish to share with the public, we feel like one of our favorite artists, Ilse Buchert Nesbitt, that "art should uplift". To that end, the work that we carry enhances and beautifies spaces. Generally, the shows we host do not attempt to create conversation relating to political or social situations in our world today. The style we focus on is abstract contemporary.

In terms of policies on work that we accept, as we are a family-friendly gallery, we limit the amount of nude work that comes in the door. We also do not wish to display work that makes grand political, religious or social statements, preferring to beautify our walls and provide refreshment to viewers, than to engage in deep conversations via the work about the state of the world. We hope you will find the work we display encouraging and uplifting.



GALLERY SITKA.COM

GALLERY SITKA™
2 SHAKER ROAD, D101
SHIRLEY, MA 01464

978.425.6290
OFFICE@GALLERY SITKA.COM
WWW.GALLERY SITKA.COM