

Gallery

SITKA™

GALLERY SITKA REPRESENTED ARTIST

MELANIE ZIBIT

For questions about purchasing the artwork,
please call 978.425.6290 or contact office@galleriesitka.com.

Catalog printed in July 2021. The prices, information,
and availability are subject to change.

View all artwork online at
GALLERYSITKA.COM

#SupportTheArts

SCULPTURE BY

MELANIE ZIBIT

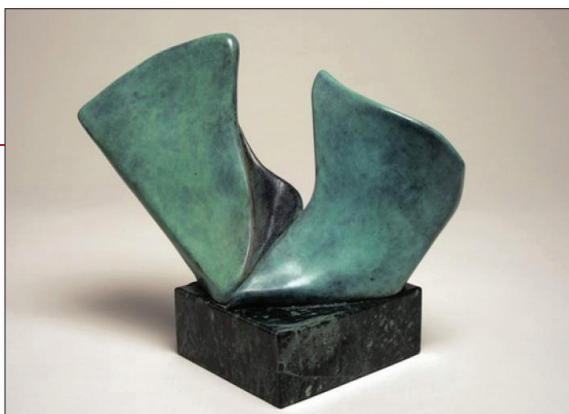


Black Spring

by Melanie Zibit
Bronze Sculpture
Created in Italy 1999;
Black and Green Patina
12" H x 10" W x 7" D
\$1,680

Sails

by Melanie Zibit
Sculpture
Approx. Base:
4.5" W x 2" H x 5" L
Approx. Sculpture & Base:
11" W x 8.5" H
\$1,700



ARTIST'S BIOGRAPHY — MELANIE ZIBIT

I learned to carve in the marble workshops of Carrara, Italy. I have lived among artists in rural Eastport, Maine and NYC. Currently I carve at the Vermont Carving Studio and Sculpture Center along with sculptors from all over New England. I give presentations at museums, schools, and universities, galleries, and arts festivals; have received commissions and exhibited in museums and galleries throughout New England and America. Won awards in 2014 and 2015 from the NYC Catharine Lorillard Wolfe Art Club and the Best Abstract in Show Cape Cod Art Association 2015. My sculptures are in private collections."

ARTIST'S STATEMENT

"In the art of sculpture...it is left to the artist to make out of many things one thing, and from the smallest part of a thing an entirety." — Rainer Maria Rilke writing about Auguste Rodin, 1919

"I am inspired by ancient and modern sculptors. I use marble and bronze, classical materials, and components of forms found in nature to create a modern statement. Leaving elements natural or forms unfinished invites the viewer to complete the form in their mind's eye."



Melanie Zibit

READ MORE AT GALLERYSITKA.COM/MELANIE-ZIBIT

HISTORY OF GALLERY SITKA

Gallery Sitka™ opened in May 2014 and was part of Sitka Creations®, a design studio. We adopted the name Gallery Sitka™ in August of 2015.

We opened another location on Friday, July 8, 2016, in downtown Fitchburg, MA. Our Ribbon Cutting was at 10 AM on July 8th and our Grand Opening and Solo Reception for Gosha Karpowicz was on July 9th from 1-4 PM. On December 1st, 2018 we closed our Fitchburg location. On June 15, 2019 we opened a tiny gallery in Shelburne Falls, MA which we closed on November 1, 2019. We currently operate out of our Shirley, MA mill space at The Phoenix Park.

We hold art exhibits in our space in Shirley. We also manage the Artist's Walkway at The Bull Run in Shirley, MA, as well as a number of other restaurants and offices in New England and in NYC.

MISSION

Our mission is to support the arts, to be part of the creative economy and provide a space for emerging artists to be seen and to have the experience of showing their work in a gallery-style atmosphere.

In terms of the style that we wish to share with the public, we feel like one of our favorite artists, Ilse Buchert Nesbitt, that "art should uplift". To that end, the work that we carry enhances and beautifies spaces. Generally, the shows we host do not attempt to create conversation relating to political or social situations in our world today. The style we focus on is abstract contemporary.

In terms of policies on work that we accept, as we are a family-friendly gallery, we limit the amount of nude work that comes in the door. We also do not wish to display work that makes grand political, religious or social statements, preferring to beautify our walls and provide refreshment to viewers, than to engage in deep conversations via the work about the state of the world. We hope you will find the work we display encouraging and uplifting.



GALLERY SITKA.COM

GALLERY SITKA™
2 SHAKER ROAD, D101
SHIRLEY, MA 01464

978.425.6290
OFFICE@GALLERY SITKA.COM
WWW.GALLERY SITKA.COM