

# Gallery

**SITKA™**

---

GALLERY SITKA REPRESENTED ARTIST

**SUSAN M. WADSWORTH**

---

For questions about purchasing the artwork,  
please call 978.425.6290 or contact [office@galleriesitka.com](mailto:office@galleriesitka.com).

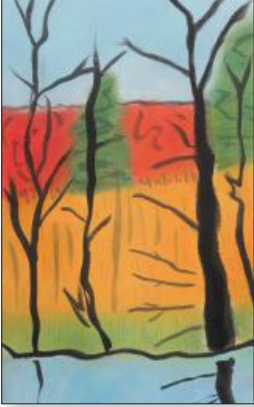
Catalog printed in July 2021. The prices, information,  
and availability are subject to change.

View all artwork online at  
[GALLERYSITKA.COM](http://GALLERYSITKA.COM)

#SupportTheArts

PAINTINGS BY

# SUSAN M. WADSWORTH



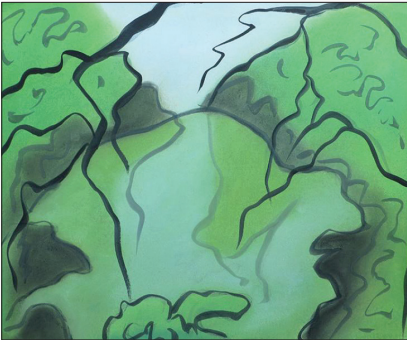
**Ashburnham Road,  
Early Fall, 2019**

by Susan Wadsworth  
Pastel & Ink on Paper  
18" x 10.5"  
\$250



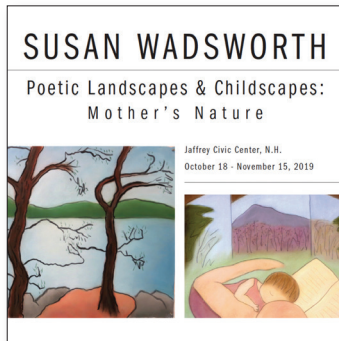
**Upper Meadow, Early Fall I, 2019**

by Susan Wadsworth  
Pastel & Ink on Paper  
9.5" x 14.5"  
\$250



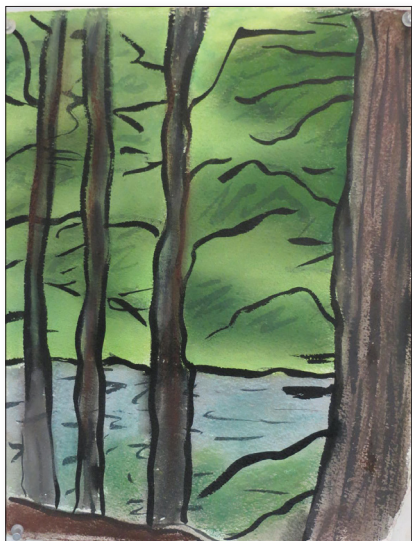
**Silver Pavilion,  
Garden Kyoto, 2019**

by Susan Wadsworth  
Pastel & Ink on Paper  
11" x 13.5"  
\$650



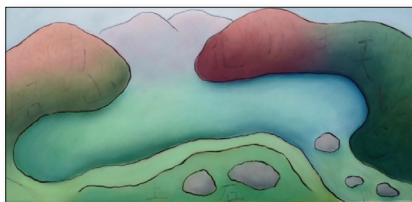
**Poetic Landscapes & Childscapes:  
Mother's Nature**

by Susan Wadsworth  
Book featuring original artwork by Susan  
Wadsworth and poetry from local poets.  
8.5" x 8"  
\$30



## Woods Road Study II, 2015

by Susan Wadsworth  
Pastel & Ink on Arches Paper  
13" x 10"  
**SOLD**



## Fall Kanji Landscape

by Susan Wadsworth  
Pastel, Pencil, & Ink on Arches Paper  
21" x 46"  
\$4,500



## Picos De Europa, 2018

by Susan Wadsworth  
Pastel, Pencil, & Ink on Arches Paper  
26" x 42"  
\$3,000



## Morning Light, Keewaydin, Algonquin to Songadeewin

by Susan Wadsworth  
Pastel, Pencil, & Ink on Arches Paper  
25" x 32"  
\$2,000



## Prince Caspian Sunset, Mattapoisett, 2014

by Susan M. Wadsworth  
Pastel & Ink on Arches Paper  
26" x 33"  
\$500



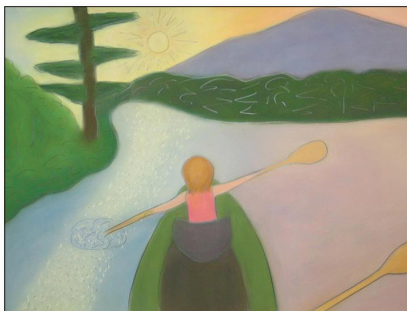
## Venice Memories, for Lizzie

by Susan Wadsworth  
Pastel, Pencil, & Ink on Arches Paper  
32" x 26"  
\$2,500



## Temagami View from Paul's Island, 2015

by Susan Wadsworth  
Pastel, Pencil, & Ink on Arches Paper  
26" x 31"  
\$2,300



## Sarah Six, Kayaking, Pool Pond, NH, Sunset Magic

by Susan Wadsworth  
Pastel, Pencil, & Ink on Arches Paper  
25" x 30"  
\$2,000



## Giusti Gardens, Verona View, 2013

by Susan Wadsworth  
Pastel & Pencil  
26" x 32"  
\$2,300



## Cortona Views, 2016

by Susan Wadsworth  
Pastel, Pencil, & Ink on Arches Paper  
26" x 32"  
\$2,300



## Icy Crotched Comet Drop, 2011

by Susan Wadsworth  
Pastel & Pencil  
26" x 32"  
\$2,300



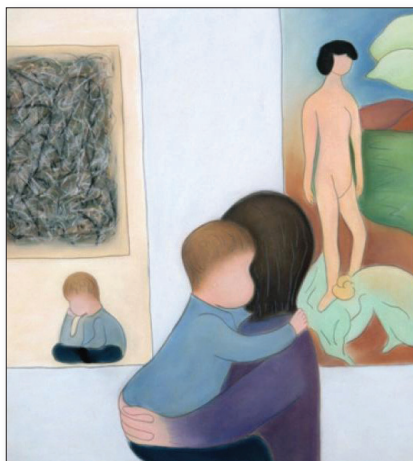
## Sunset Comet Drop, 2011

by Susan Wadsworth  
Pastel & Pencil  
26" x 32"  
\$2,300



## Sofa Cuddle

by Susan Wadsworth  
Pastel, Pencil, & Ink on Arches Paper  
35" x 30"  
\$2,000



## Matisse/Picasso, MOMA 3/28/03: 'Your son is a work of art.'

by Susan Wadsworth  
Pastel, Pencil, & Ink on Arches Paper  
20" x 20"  
\$3,000



## After September 11: Freedom of Worship, Freedom from Want (Timberkill Grace)

by Susan Wadsworth  
Pastel, Pencil, & Ink on Arches Paper  
25 1/2" x 31 1/2"  
\$2,000



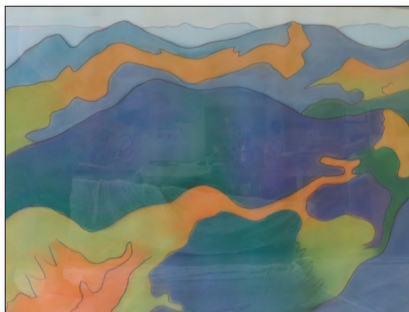
## Hartford Abstraction III: Night, 1992

by Susan Wadsworth  
Pastel & Pencil on Arches Paper  
24.5" x 34.5"  
\$325



## White Mountains, Fall Shadows I, 1998

by Susan Wadsworth  
Pastel & Pencil  
24" x 31"  
\$1,800



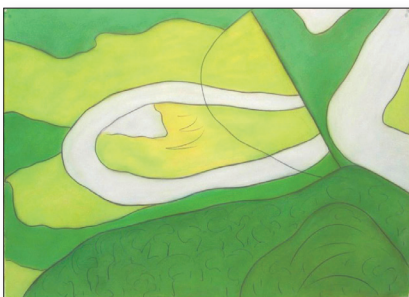
## White Mountains, Fall Shadows II, 1998

by Susan Wadsworth  
Pastel & Pencil  
24" x 31"  
\$1,800



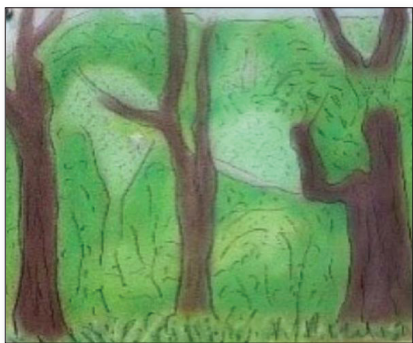
## Basin Harbor Triptych: Composite View of Golf Course, Holes 5, 7, 15, 17, Center Panel, 1992

by Susan Wadsworth  
Pastel & Pencil on Arches Paper  
21" x 31"  
\$350



## Oxbow Triptych, Approach over Mt. Tom, Left Panel, 1990

by Susan Wadsworth  
Pastel & Pencil on Arches Paper  
24.5" x 34.5"  
\$325



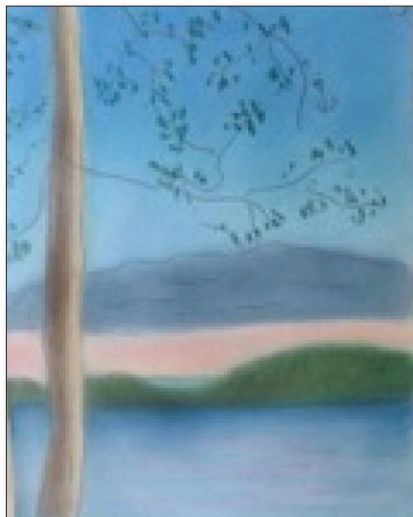
## Ridge View to 313

by Susan Wadsworth  
Pastel, Pencil, & Ink on Arches Paper  
10 ¼" x 13 ½"  
\$600



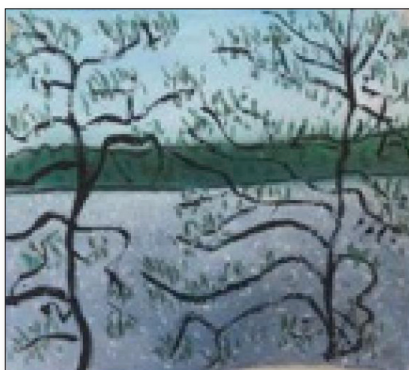
## Ojibway Water Tower View

by Susan Wadsworth  
Pastel, Pencil, & Ink on Arches Paper  
14" x 10 ½"  
\$600



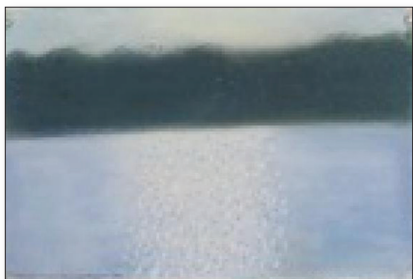
## Temagami, Manitou Sunset

by Susan Wadsworth  
Pastel & Pencil on Arches Paper  
13.5" x 10.5"  
\$100



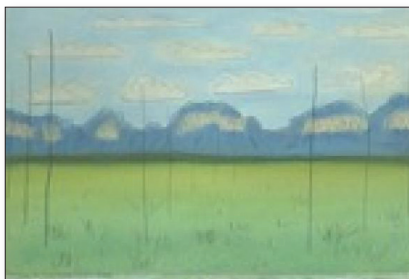
## Temagami View Waubeno

by Susan Wadsworth  
Pastel & Pencil on Arches Paper  
8" x 9"  
\$50



## Temagami Narrows, Sparkling Sun

by Susan Wadsworth  
Pastel & Pencil on Arches Paper  
8" x 12"  
\$250



## Lightning Field

by Susan Wadsworth  
Pastel & Pencil on Arches Paper  
7.75" x 12"  
\$150



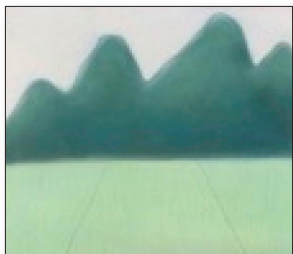
## Theodore Roosevelt Park South, Meadow Colors

by Susan Wadsworth  
Pastel & Pencil on Arches Paper  
10.5" x 13"  
\$150



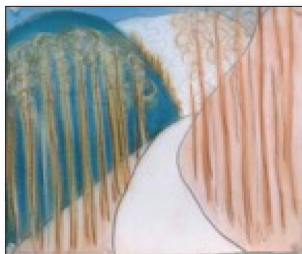
## Tree Rhythms Ridge

by Susan Wadsworth  
Pastel & Pencil on Arches Paper  
10" x 14"  
\$100



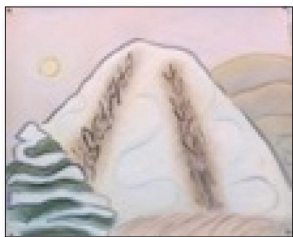
## Japan Study with Rice Fields

by Susan Wadsworth  
Pastel & Pencil on Arches Paper  
10" x 14"  
\$50



## EZ Street, Aspens Glow, Canyons

by Susan Wadsworth  
Pastel & Pencil on Arches Paper  
11" x 13"  
\$100



## Stratton

by Susan Wadsworth  
Pastel & Ink on Arches Paper  
26" x 32"  
\$650



## Sugarbush, Mt. Ellen

by Susan Wadsworth  
Pastel & Pencil on Arches Paper  
10" x 13"  
\$150



## Mesa Verde, Spruce Tree House

by Susan Wadsworth  
Pastel & Pencil on Arches Paper  
10" x 13"  
\$150



## Gray Sunrise Beppu

by Susan Wadsworth  
Pastel & Pencil on Arches Paper  
13" x 10"  
\$150

## ARTIST'S BIOGRAPHY & STATEMENT — SUSAN M. WADSWORTH

I was born in Pittsburg, PA in 1955. My parents moved to West Arlington, VT when my father retired, in 1971. They had met in Manchester, VT many years earlier, and our family had always vacationed in Manchester until they bought the farmhouse in West Arlington. The rounded forms in my art often echo these New England hills and mountains. I married David Bourdelais in 1981, and we have three wonderful children who are now grown and are on their own adventures."

"I earned my B.A. in art from Colby College in Maine in 1977 with honors: Phi Beta Kappa and Magna Cum Laude. I attended two graduate schools, earning an M.F.A. from Cranbrook Academy of Art in Bloomfield Hills, MI in painting in 1981 and a M.A. in art history from Tufts in 1989. My specialty is modern abstraction, both in my own work and in historical analysis. I am usually inspired by the landscapes of the places I live and visit.

"I began teaching at Fitchburg State in Massachusetts in 1992, moving to Rindge, NH in 1993. As a professor, I taught studio art and a wide range of art history: from modernism and the history of architecture to Asian art and interdisciplinary courses including some philosophy, music, and even literature. I have presented over three dozen papers and published over one hundred art reviews over 30 years.

"In my own drawings, I have always been inspired by landscapes, especially the rolling hills of New England. At first, in the late 1980s, I was inspired by flying over New England, where my small shapes from the earlier 1980s were integrated into broader landscapes. In 1999, I was inspired by the birth of my third child (a daughter) to create "childscapes," or life from the mother's point of view.

"When my children outgrew the limits of the "childscapes," I returned to abstracted landscapes inspired by travels to western Europe, Asia, Central American, and North America. After visiting China and Japan in 2015, 2017, and 2019, I began to integrate the use of black ink with my pastels. My works have many layers of pastel which are then outlined in pencil or ink to emphasize the basic shapes, textures, and varying use of line.

"I am fascinated by the landscape abstraction of Japanese prints, the Abstract Expressionists (especially Jackson Pollock and Mark Rothko), and the work of the Early American Modernists associated with the galleries of Alfred Stieglitz, including Georgia O'Keeffe, Arthur Dove, Marsden Hartley, Lawren Harris of the Canadian Group of Seven, Emily Carr and others. The simplicity of the forms and layered textures echo the energy and rhythms of daily life. The mood is peaceful but energized.

"I have been exhibiting my pastel works broadly throughout New England and upstate NY. In 2008, I organized the Fall Foliage Art Studio Tour in the Monadnock Region, and it continues to this day over Columbus Day weekend, with the exception of cancellation in fall 2020 due to Covid-19."

Susan M. Wadsworth joined Gallery Sitka at the very end of 2017.

Born: Pittsburg, PA | 1955

Studio: Rindge, NH

[READ MORE AT GALLERYSITKA.COM/SUSAN-M-WADSWORTH](https://www.galleriesitka.com/susan-m-wadsworth)

## HISTORY OF GALLERY SITKA

Gallery Sitka™ opened in May 2014 and was part of Sitka Creations®, a design studio. We adopted the name Gallery Sitka™ in August of 2015.

We opened another location on Friday, July 8, 2016, in downtown Fitchburg, MA. Our Ribbon Cutting was at 10 AM on July 8th and our Grand Opening and Solo Reception for Gosha Karpowicz was on July 9th from 1-4 PM. On December 1st, 2018 we closed our Fitchburg location. On June 15, 2019 we opened a tiny gallery in Shelburne Falls, MA which we closed on November 1, 2019. We currently operate out of our Shirley, MA mill space at The Phoenix Park.

We hold art exhibits in our space in Shirley. We also manage the Artist's Walkway at The Bull Run in Shirley, MA, as well as a number of other restaurants and offices in New England and in NYC.

## MISSION

Our mission is to support the arts, to be part of the creative economy and provide a space for emerging artists to be seen and to have the experience of showing their work in a gallery-style atmosphere.

In terms of the style that we wish to share with the public, we feel like one of our favorite artists, Ilse Buchert Nesbitt, that "art should uplift". To that end, the work that we carry enhances and beautifies spaces. Generally, the shows we host do not attempt to create conversation relating to political or social situations in our world today. The style we focus on is abstract contemporary.

In terms of policies on work that we accept, as we are a family-friendly gallery, we limit the amount of nude work that comes in the door. We also do not wish to display work that makes grand political, religious or social statements, preferring to beautify our walls and provide refreshment to viewers, than to engage in deep conversations via the work about the state of the world. We hope you will find the work we display encouraging and uplifting.



# GALLERY SITKA.COM

GALLERY SITKA™  
2 SHAKER ROAD, D101  
SHIRLEY, MA 01464

978.425.6290  
OFFICE@GALLERY SITKA.COM  
WWW.GALLERY SITKA.COM