

# Gallery

SITKA™

---

## ARTISAN HAIR AND NAIL STUDIO LEOMINSTER, MA

---

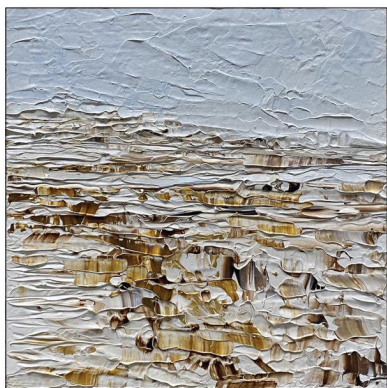
For questions about purchasing the artwork,  
please call 978.425.6290 or contact [office@gallerysitka.com](mailto:office@gallerysitka.com).

View the artworks online at  
[GALLERYSITKA.COM](http://GALLERYSITKA.COM)

#SupportTheArts

ARTWORK BY

# RUTH LAGUE

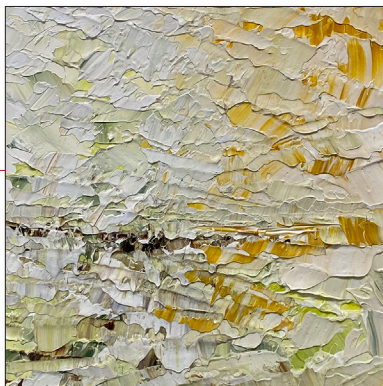


## Winterscape

by Ruth LaGue  
Acrylic on Board  
8 x 8"  
\$250

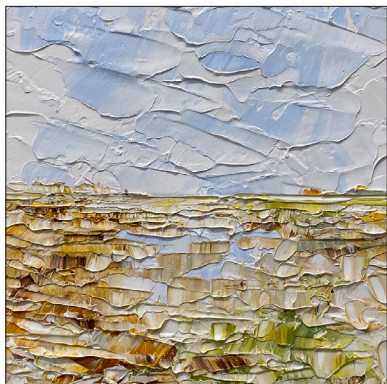
## Clouds on Mam Tor

by Ruth LaGue  
Acrylic on Board  
8 x 8"  
\$250



## Marsh

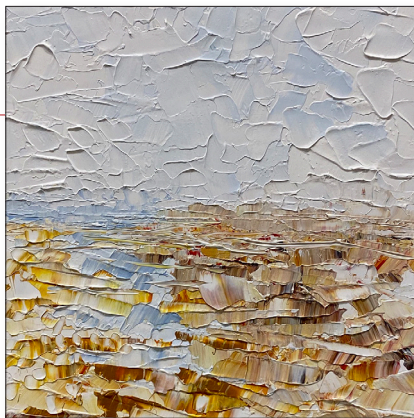
by Ruth LaGue  
Acrylic on Board  
8 x 8"  
\$250



## Coast

---

by Ruth LaGue  
Acrylic on Board  
8 x 8"  
\$250



## Pond

---

by Ruth LaGue  
Acrylic on Board  
8 x 8"  
\$250

## Tuscon

---

by Ruth LaGue  
Acrylic on Board  
8 x 8"  
\$250





## Oceanside

by Ruth LaGue  
Acrylic on Board  
8 x 8"  
\$250

## The Brook

by Ruth LaGue  
Acrylic on Canvas  
36 x 36"  
\$3,200



## Inlet

by Ruth LaGue  
Acrylic on Canvas  
30 x 30"  
\$2,500

## Walking on Rocky Soil

by Ruth LaGue  
Acrylic on Canvas  
36 x 36"  
\$3,200



## Rocks, Pebbles, Flowers

by Ruth LaGue  
Acrylic on Canvas  
36 x 36"  
\$3,500

### ABOUT RUTH LAGUE

Ruth LaGue grew up in Alaska, awed by the incredible vastness of the wild landscape. Gazing at the expansive skies and majestic mountains as a girl, Ruth recognized that she was a small part of something much larger than herself.

Traveling through India in her twenties, she became consumed by the landscape of the spirit — that limitless interior universe that lives in each of us. The marriage of the two experiences ignited a lifelong quest to connect the outer and inner within her paintings.

Ruth LaGue strives for visual economy in her work; to her, landscapes represent fragments of time that will never be again; intimate moments of communion with something greater than herself; quiet meditations to which she bears witness. They compel her to paint.



# NECKLACES BY **AYALA NAPHTALI**



## **Aventurine Pendant Necklace**

by Ayala Naphtali  
Made in NYC  
\$150

## **Peridot, Turquoise & Coconut Shell Necklace**

by Ayala Naphtali  
Made in NYC  
\$260



# EARRINGS BY **DEBORAH CROSS**

## Fish & Sea Glass Earrings

by Deborah Cross  
Made in North Central MA  
with Genuine Sea Glass  
\$40



## Filigree & Sea Glass Earrings

by Deborah Cross  
Made in North Central MA  
with Genuine Sea Glass  
\$40

## HISTORY OF GALLERY SITKA

Gallery Sitka™ opened in May 2014 and was part of Sitka Creations®, a design studio. We adopted the name Gallery Sitka™ in August of 2015.

We opened another location on Friday, July 8, 2016, in downtown Fitchburg, MA. Our Ribbon Cutting was at 10 AM on July 8th and our Grand Opening and Solo Reception for Gosha Karpowicz was on July 9th from 1-4 PM. On December 1st, 2018 we closed our Fitchburg location. On June 15, 2019 we opened a tiny gallery in Shelburne Falls, MA which we closed on November 1, 2019. We currently operate out of our Shirley, MA mill space at The Phoenix Park.

We hold art exhibits in our space in Shirley. We also manage the Artist's Walkway at The Bull Run in Shirley, MA, as well as a number of other restaurants and offices in New England and in NYC.

## MISSION

Our mission is to support the arts, to be part of the creative economy and provide a space for emerging artists to be seen and to have the experience of showing their work in a gallery-style atmosphere.

In terms of the style that we wish to share with the public, we feel like one of our favorite artists, Ilse Buchert Nesbitt, that "art should uplift". To that end, the work that we carry enhances and beautifies spaces. Generally, the shows we host do not attempt to create conversation relating to political or social situations in our world today. The style we focus on is abstract contemporary.

In terms of policies on work that we accept, as we are a family-friendly gallery, we limit the amount of nude work that comes in the door. We also do not wish to display work that makes grand political, religious or social statements, preferring to beautify our walls and provide refreshment to viewers, than to engage in deep conversations via the work about the state of the world. We hope you will find the work we display encouraging and "uplifting".



# GALLERY SITKA.COM

GALLERY SITKA™  
2 SHAKER ROAD, D101  
SHIRLEY, MA 01464

978.425.6290  
OFFICE@GALLERYSITKA.COM  
WWW.GALLERYSITKA.COM